



AXView Solution for Solar Energy User Manual of Installation and Configuration 1.0.0.1

Published by Software & Solution Division

Release Date: 2017/2/22



AXView Solution for Solar Energy Installation and Configuration

Software & Solution Division

Release Note

| Version | Revised Date | Author | Description |
|---------|--------------|---------|---------------|
| 1.0.0.1 | 2017/2/22 | Mark Lu | - 1st release |

Index

| | |
|---|---|
| I. System Installation and Configuration..... | 1 |
| 1.1 Installation..... | 1 |
| 1.2 Configuration..... | 2 |



AXView Solution for Solar Energy Installation and Configuration

Software & Solution Division

I. System Installation and Configuration

1.1 Installation - Step-by-step

- A. One Click for Installation (Run as Administrator)
- B. Install Successfully



AXView Solution for Solar Energy Installation and Configuration

Software & Solution Division

1.2 Configuration - Step-by-step

A. Login and Select Cloud Service

A screenshot of the 'AXView - Solar Config Generator' application window. The window has a dark purple title bar with the application name and a close button. The main content area is white and contains two sections: 'Login' and 'Database Settings'. The 'Login' section has a label 'ID:' followed by a text input field. The 'Database Settings' section has a label 'Select Database:' followed by a dropdown menu currently showing 'Azure Cloud'. Below this is a button labeled 'Select Connection Key File'. A right-pointing arrow is located in the bottom right corner of the window's content area.

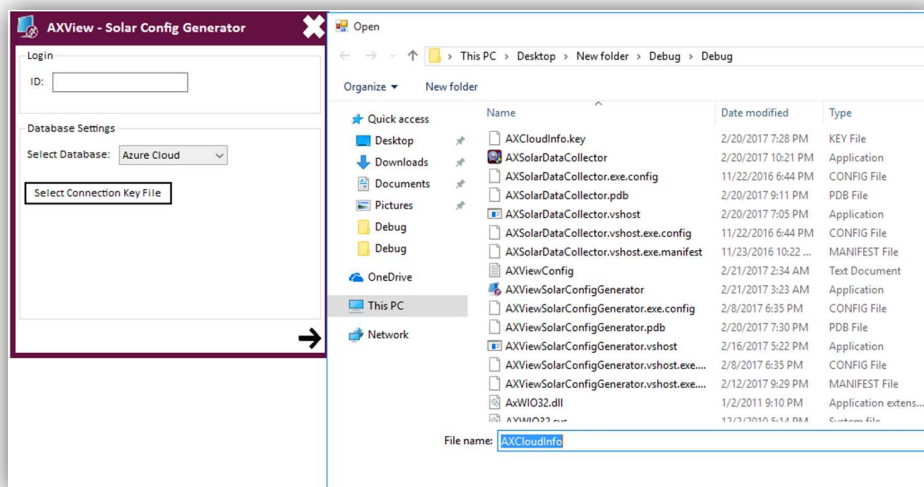
- i. Key-in ID (ID is EIN of Group).



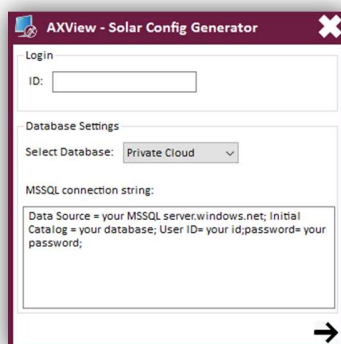
AXView Solution for Solar Energy Installation and Configuration

Software & Solution Division

- ii. Select cloud. (choose one)
- Azure Cloud: select connection key file (AXCloudInfo.key).



- Private Cloud: key-in connection string of MSSQL Server.
(Template: Data Source=YOURMSSQLSERVER; Initial Catalog=YOURDATABASE;
User ID=YOURID; password=YOURPASSWORD;)



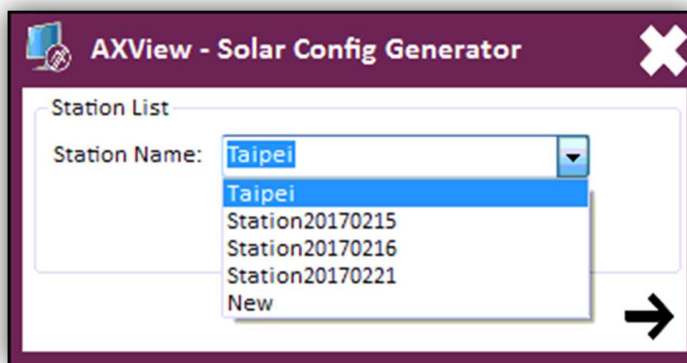


AXView Solution for Solar Energy Installation and Configuration

Software & Solution Division

- iii. Click (→) for checking and going to next step.
 - Error Status 1: EIN is wrong.
 - Error Status 2: connection key is wrong.

B. Station Selection



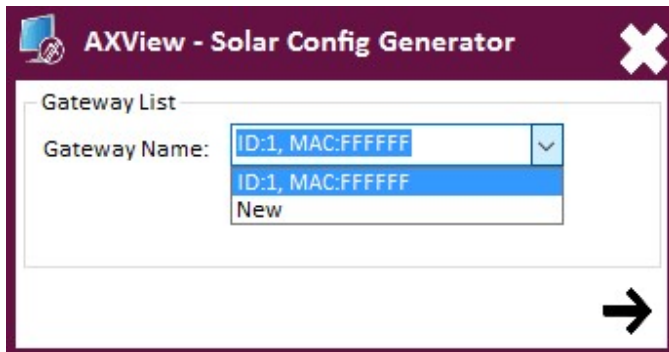
- i. New: if this station is new one, select “New”, in the drop-down list, to create a new station.
- ii. Station Name: if this station is existed, select station name in the drop-down list.
- iii. Click (→) for checking and going to next step.



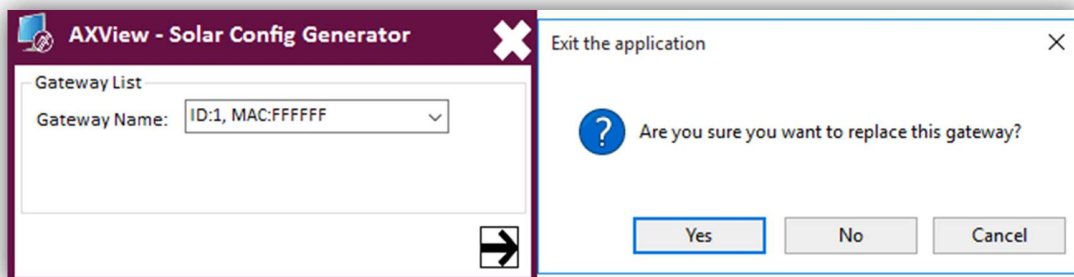
AXView Solution for Solar Energy Installation and Configuration

Software & Solution Division

C. Gateway Selection



- i. New: if this gateway is new one, select “New”, in the drop-down list, to create a new gateway.
- ii. Gateway Name: if this gateway is replace (or back from RMA) one, select gateway name, that MAC is original, in the drop-down list.



- iii. Click (→) for checking and going to next step.

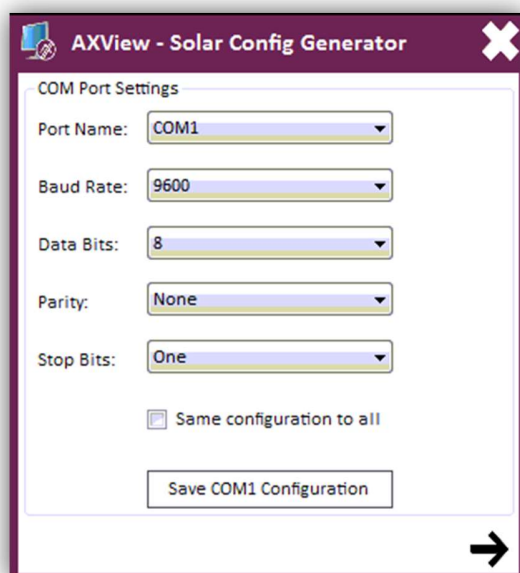


AXView Solution for Solar Energy Installation and Configuration

Software & Solution Division

D. COM Port Settings

Configure each COM port that you want to use to communicate with Modbus device (inverters or sensors).



- i. Configure separately in each COM Port.
 - Select Port Name, and configure Baud Rate, Data Bits, Parity and Stop Bits. Then, click “Save COMx Configuration”.
- ii. Configure each COM Port in the same configuration.
 - If all the COM ports are in the same configuration, before click “Save COMx Configuration”, please check the check box of “Same configuration to all”.
- iii. Click (→) for checking and going to next step.

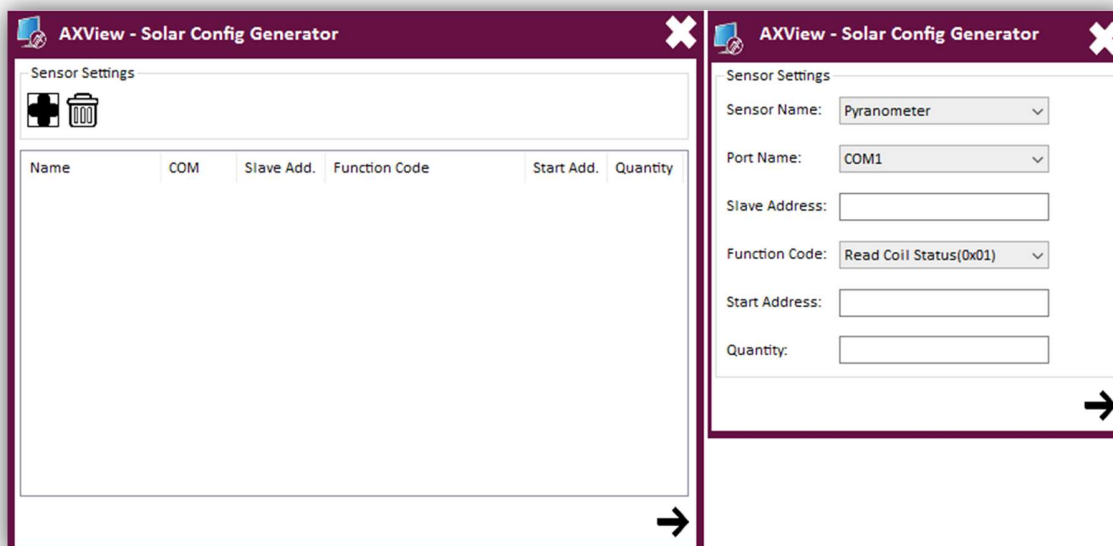


AXView Solution for Solar Energy Installation and Configuration

Software & Solution Division

E. Sensor Settings

If you want to set up sensors (Pyranometer, Temperature and Humidity Sensors) on this gateway, please configure them in this page. Otherwise, click (→) for checking and going to next step.



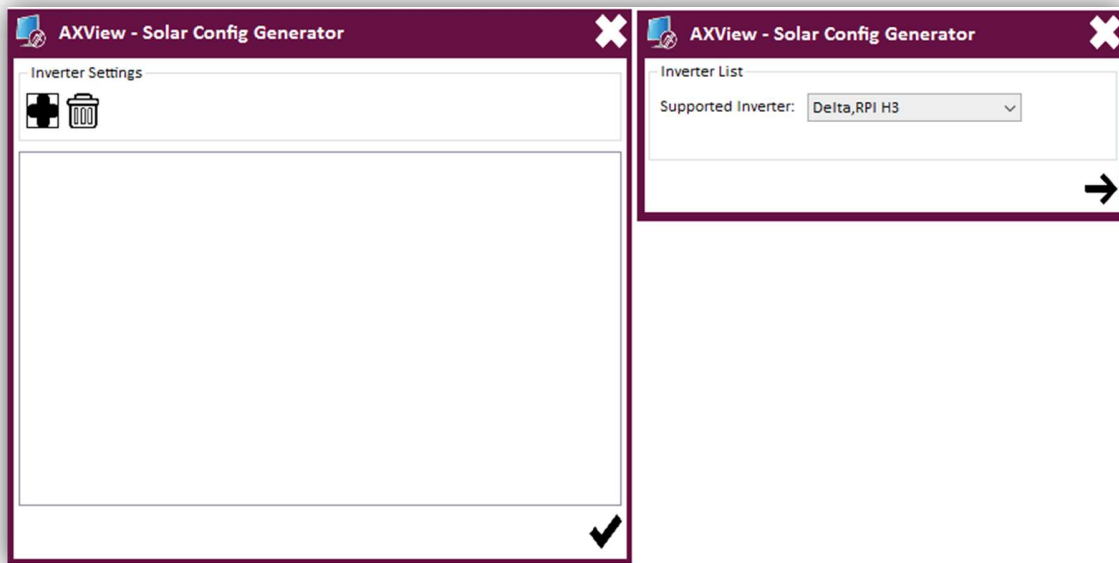
- i. Click “+” to set up a sensor. Otherwise, click “-” to remove a sensor.
- ii. Set Configuration of sensor that you want to set up with Modbus protocol format.
 - There are only 1 Pyranometer, 1 Temperature Sensor and 1 Humidity Sensor in the same gateway.
- iii. Click (→) for checking and going to next step.



AXView Solution for Solar Energy Installation and Configuration

Software & Solution Division

F. Inverter Settings



- i. Click “+” to set up an inverter. Otherwise, click “-” to remove an inverter.
- ii. Select your inverter model in drop-down list.
 - If your model is not in list, please info us.
- iii. Click (→) for checking and going to next step.



AXView Solution for Solar Energy Installation and Configuration

Software & Solution Division

- G. After configuration, you will see all configuration and live data from Modbus device (inverter or sensor). It means your settings are correct and working for collection data.

| AX Solar Config | | | | | |
|-------------------------------|---------------------|---------------------|----------------------------|------------|--------|
| Gateway Information | | | | | |
| Station ID: 30001 | Gateway ID: 3000101 | 2017/02/17 09:27:55 | | | |
| Station Name: Hsinchu Station | Unit Price: 7.2 | | | | |
| Inverter ID | Name | Slave Add. | Function Code | Start Add. | Value |
| 300010101 | Temp_OnSite | 0x1 | Read Input Registers(0x04) | 0x437 | 31 |
| 300010101 | In_Voltage | 0x1 | Read Input Registers(0x04) | 0x420 | 381.70 |
| 300010101 | In_Current | 0x1 | Read Input Registers(0x04) | 0x421 | 0.44 |
| 300010101 | In_Watt | 0x1 | Read Input Registers(0x04) | 0x422 | 173 |
| 300010101 | In_Today_Watt | 0x1 | Read Input Registers(0x04) | 0x42F | 310 |
| 300010101 | Out_Voltage | 0x1 | Read Input Registers(0x04) | 0x420 | 223.80 |
| 300010101 | Out_Current | 0x1 | Read Input Registers(0x04) | 0x421 | 0.93 |
| 300010101 | Out_Watt | 0x1 | Read Input Registers(0x04) | 0x422 | 217 |
| 300010101 | Out_Today_Watt | 0x1 | Read Input Registers(0x04) | 0x42F | 310 |