



AXView Solution for Solar Energy User Manual for Administrator Management and Operation 1.0.0.1

Published by Software & Solution Division

Release Date: 2017/2/22



AXView Solution for Solar Energy User Manual for Administrator

Software & Solution Division

Release Note

Version	Revised Date	Author	Description
1.0.0.1	2017/2/22	Mark Lu	- 1st release

Table of Contents

I.	System Management and Operation	1
●	1.1 Management Layers	1
●	1.2 Operation of each Tab Page of Website of AXView Solution	2



AXView Solution for Solar Energy User Manual for Administrator

Software & Solution Division

I. System Management and Operation

1.1 Management Layers

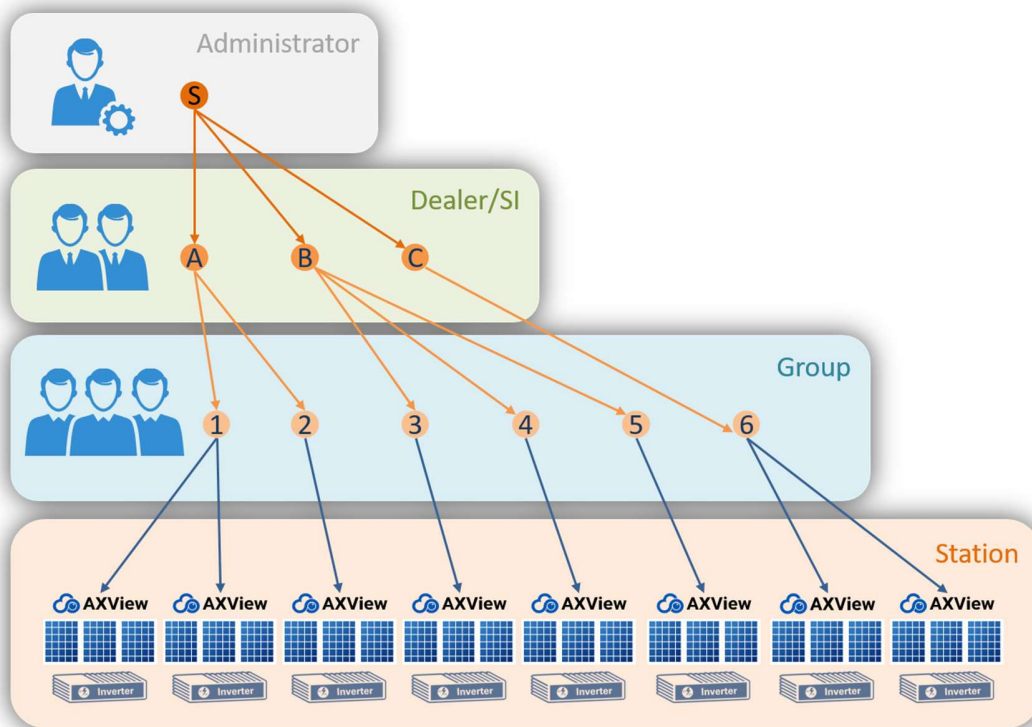


Diagram 1.1-1 Different roles played in the AXView solution

A. Administrator (backend manager of AXView solution – login from [HERE](#))

- i. Axiomtek is to play this role (the top layer in Diagram1.1-1)
- ii. Play in approving applications submitted by dealers/system integrators for using the system and in managing existed dealers/ system integrators.



AXView Solution for Solar Energy User Manual for Administrator

Software & Solution Division

1.2 Operation of each Tab Page of Website of AXView Solution

- A. Survey: as shown in Figure 1.2-1, this tab page provides for approving applications submitted by dealers/system integrators for using the system.

The screenshot displays the 'Survey' tab page of the AXView solution website. The page features a navigation menu with 'Survey', 'Dealer/SI', 'Group', 'Settings', and 'Logout' tabs. The main content area is titled 'Dealer/SI Apply List' and contains a table with the following data:

	Company	Contact	TEL	Ext.	Apply Date
Select	艾訊股份有限公司	呂柏冠	+886229174551	7476	2016/11/24 10:55:52
Select	Axiomtek	馬克 Lu	+886229174552	7477	2016/11/24 10:58:38
Select	Axiomtek	Cheng	+886229174550	7696	2016/11/25 10:12:45
Select	Food Panda	熊繼群天	+88623452345	9999	2016/11/25 10:17:45
Select	暴風雪	我是地獄塔	+88609780978	7777	2016/11/25 10:21:38
Select	axiomtek	rvan.hsu	+8860913362906	7695	2016/11/25 10:34:24

Below the table is the 'Dealer/SI Survey Form' section, which includes a 'Contact Window' and 'Invoice Information' fields. The 'Contact Window' fields are: Name (Cheng), TEL (+886229174550), Ext. (7696), and Email (chicheng.wang@axiomtek.com.tw). The 'Invoice Information' fields are: Company / Name (Axiomtek), Company Tax ID (EIN) (23718012), TEL (+886229174550), FAX (+886229176350), and Address (11F., No.2, Ln. 235, Baoqiao Rd., Xindian Dist., New Taipei City 231, Taiwan (R.O.C.)). At the bottom of the form, there are 'Accept' and 'Reject' buttons.

Figure 1.2-1 Snapshot of “Survey” tab page of AXView solution website

- i. Accept: approve an application submitted by dealers/system integrators.
- ii. Reject: reject an application submitted by dealers/system integrators.



AXView Solution for Solar Energy User Manual for Administrator

Software & Solution Division

- iii. Rejected List: as shown in Figure 1.2-2
 01. List all be rejected Dealer/SI.
 02. You can re-survey them by selecting a dealer/system integrator and clicking “Re-survey”.

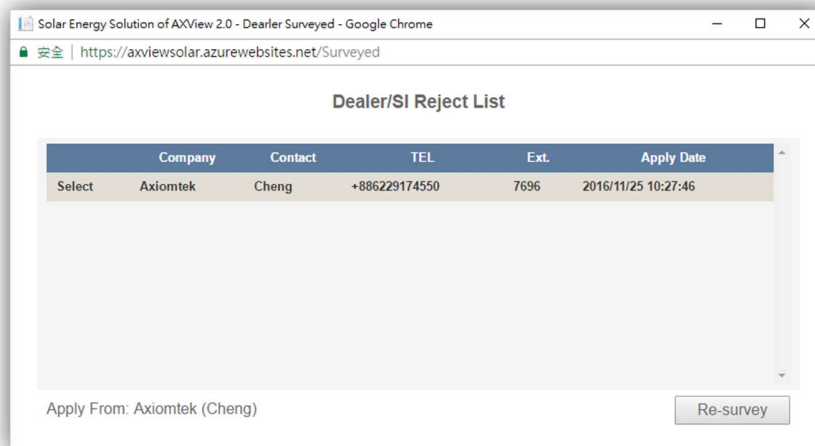


Figure 1.2-2 Snapshot of “Dealer/SI Reject List” page of AXView solution website



AXView Solution for Solar Energy User Manual for Administrator

Software & Solution Division

- B. Dealer/SI: as shown in Figure 1.2-3, this tab page provides for managing existed dealers/
system integrators.

	Company	Tax ID	Contact	TEL	Ext.
Select	Axiomtek SNS	29174550	ChiCheng Wang	+886229174550	7696
Select	Axiomtek Co., Ltd.	76769059	Brandon Wang	+886229174550	7471

Dealer/SI Detail Information

Contact Window

Name: ChiCheng Wang
 TEL: +886229174550 Ext: 7696
 Email: chicheng.wang@axiomtek.com.tw

Invoice Information

Company / Name: Axiomtek SNS
 Company Tax ID (EIN): 29174550
 TEL: +886229174550
 FAX: +886229176350
 Address: 10F., No 2, Aly. 6, Ln. 235, Baoqiao Rd., Xindian Dist., New Taipei City 231, Taiwan (R.O.C.)

Buttons: Disable, Save

Figure 1.2-3 Snapshot of “Dealer/SI” tab page of AXView solution website

- i. Disable: suspend a Dealer/SI to use this solution.
- ii. Save: modify data of Dealer/SI. (* **ONLY** EIN could not be modified.)



AXView Solution for Solar Energy User Manual for Administrator

Software & Solution Division

- iii. Disable List: as shown in Figure 1.2-4.
 - 01. List all be suspended dealers/system integrators.
 - 02. You can do reactivation a dealer/system integrator by selecting a dealer/system integrator and clicking “Activate”.



Figure 1.2-4 Snapshot of “Dealer/SI Disable List” page of AXView solution website



AXView Solution for Solar Energy User Manual for Administrator

Software & Solution Division

- C. **Group:** as shown in Figure 1.2-5, this tab page shows data of group user and today status of station of the group user you selected.

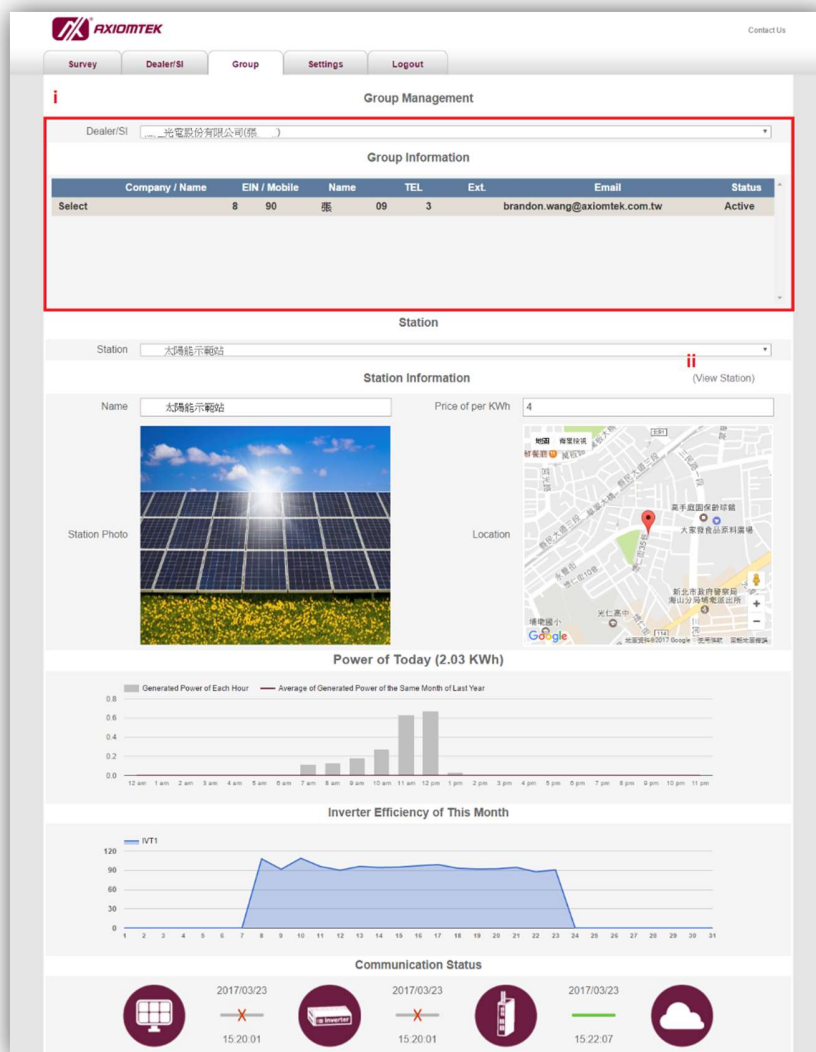


Figure 1.2-5 Snapshot of “Group” tab page of AXView solution website



AXView Solution for Solar Energy User Manual for Administrator

Software & Solution Division

- i. Select “Dealer/SI” first, then select group user in the list of “Group Information”. And you can browse station detail status of today by selecting a station in the drop-down list of “Station”.
 - ii. If you want to browse more detail information/status of this station, you can click “View Station”.
01. Current Page: as shown in Figure 1.2-6, this page illustrates the geographical location and the equipment on the user site; whereas the right hand side of the figure illustrates the condition of power generation in real time environment.

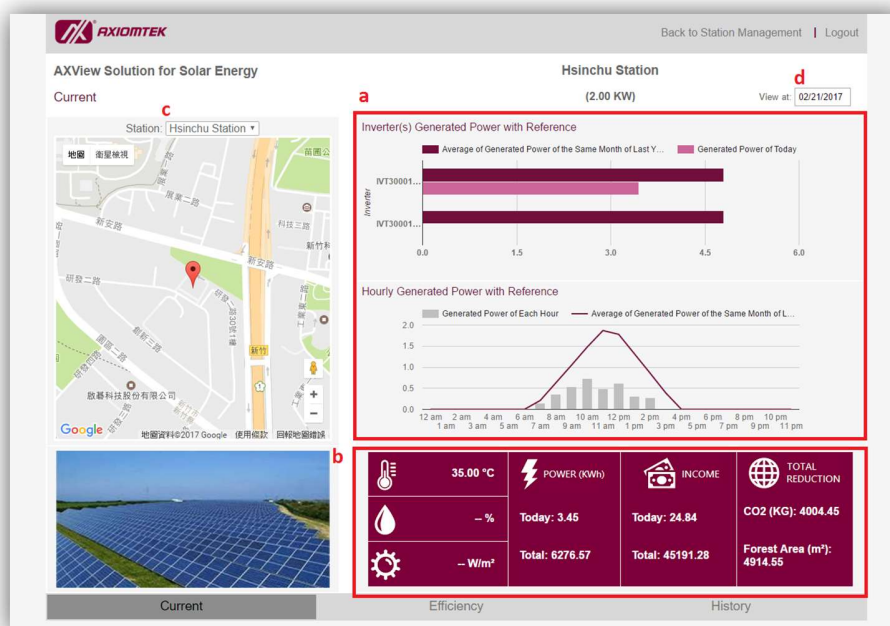


Figure 1.2-6 Snapshot of “Current” page of AXView solution website



AXView Solution for Solar Energy User Manual for Administrator

Software & Solution Division

a. The meaning of charts shown at the upper right hand corner of "Current" page


⊙ "Inverter(s) Generated Power with Reference":


Dark color refers to the accumulative power volume measured at each inverter today. Light color refers to the daily average power volume measured at each inverter during the same months in last year.


⊙ "Hourly Generated Power with Reference":


The curve refers to the hourly average power volume in each hour during the same months in last year. Vertical bar refers to the accumulative power volume in each hour today.


b. The meaning of icons shown at the lower right hand corner of "Current" page


⊙ : Temperature in the environment at the site (optional)

⊙ : Humidity in the environment at the site (optional)

⊙ : Intensity of the sun light (optional)

⊙ : The accumulative power volume during today and in the past

⊙ : The profit from power generation during today and in the past (optional: if you sold the generated power.)

⊙ : The reduction of CO2 emission volume and area of forest cut-down



AXView Solution for Solar Energy User Manual for Administrator

Software & Solution Division

due the use of solar power in the past

- c. You can change to browse status of another station by selecting station in the drop-down list of “Station” in upper left.
- d. You can review condition of power generation of other day by selecting the date, which you want to review, in textbox of “View at” or key-in date in format of “MM/DD/YYYY”, as shown in Figure 1.2-7.

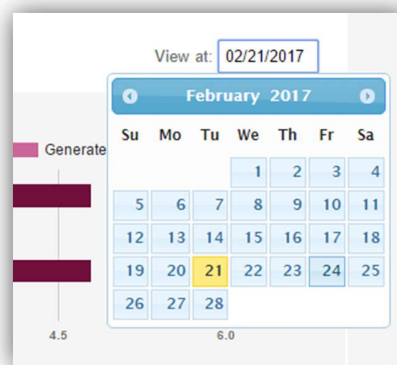


Figure 1.2-7 Snapshot of date selection



AXView Solution for Solar Energy User Manual for Administrator

Software & Solution Division

02. Efficiency Page: as shown in Figure 1.2-8, the left hand side of the figure illustrates the geographical location and the equipment on the user site; whereas the right hand side of the figure illustrates the condition of power generation in real time environment.

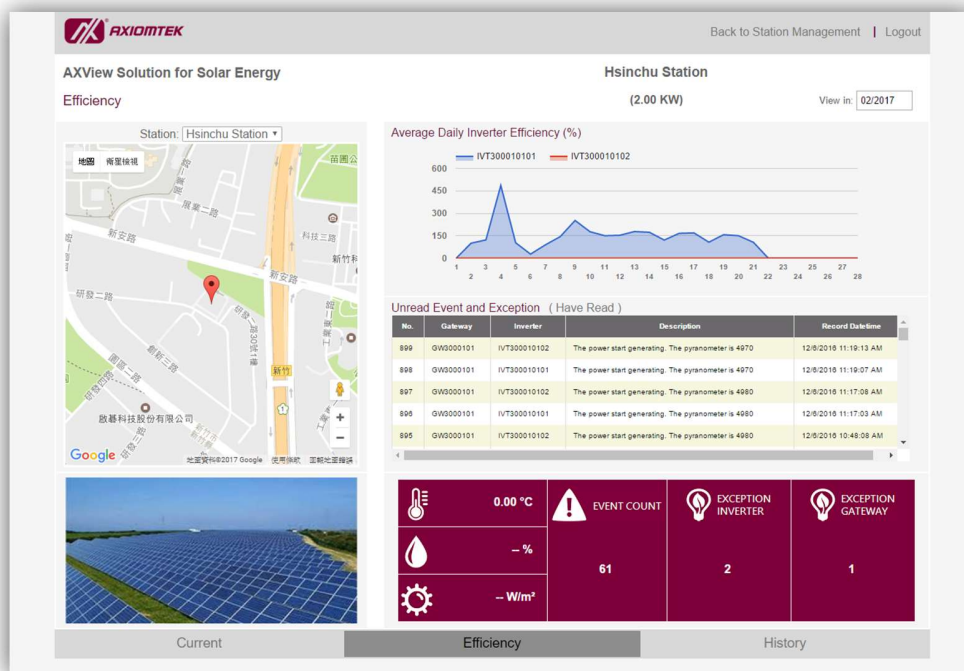


Figure 1.2-8 Snapshot of "Efficiency" page of AXView solution website

- a. The meaning of charts shown at the upper right hand corner of "Efficiency" page

⊙ "Average Daily Inverter Efficiency (%)":

The curve shown at the upper right hand corner represents the daily conversion



AXView Solution for Solar Energy User Manual for Administrator

Software & Solution Division

efficiency of the power generation in this month.

☉ “Unread Event and Exception”:

The table shown in the middle part of the right hand side represents the records of abnormal incidents been detected by the system. And clicking “Delete”, the message you selected will be moved to “Have Read” page.


☉ “(Have Read)”:

This hyperlink directs to “Have Read” page and shows the event messages that you have read.

No.	Gateway	Inverter	Description	Record Datetime
877	GW3000101	IVT300010102	The power stop generating. The pyranometer is 5010	11/29/2016 6:51:28 PM
856	GW3000101	IVT300010101	The power stop generating. The pyranometer is 4680	11/10/2016 6:15:57 PM
853	GW3000101	IVT300010102	The power stop generating. The pyranometer is 4650	11/10/2016 6:14:20 PM
845	GW3000101	IVT300010102	The power stop generating. The pyranometer is 4650	11/10/2016 6:11:04 PM
829	GW3000101	IVT300010102	The power start generating. The pyranometer is 4910	11/10/2016 4:23:06 PM
828	GW3000101	IVT300010101	The power start generating. The pyranometer is 4910	11/10/2016 4:23:00 PM

Figure 1.2-9 Snapshot of “Have Read” page of AXView solution






b. The meaning of icons shown at the lower right hand corner of “Efficiency” page

- ☉ : Temperature in the environment at the site (optional)



AXView Solution for Solar Energy User Manual for Administrator

Software & Solution Division

- : Humidity in the environment at the site (optional)
 - : Intensity of the sun light (optional)
 -  **EVENT COUNT**: The counting of abnormal incidents
 -  **EXCEPTION INVERTER**: The counting of abnormal incidents at the inverter, including that of the start time of power generation, the end time of power generation, and definitions of abnormal incidents at the inverter
 -  **EXCEPTION GATEWAY**: The counting of abnormal incidents coming from the Gateway, and detection of abnormal temperature of CPU and system during the operation of the ICO300
- c. You can change to browse status of another station by selecting station in the drop-down list of “Station” in upper left.
- d. You can review condition of power generation of other month by selecting the month, which you want to review, in textbox of “View in” or key-in date in format of “MM/YYYY”. As shown in Figure 1.2-10.



AXView Solution for Solar Energy User Manual for Administrator

Software & Solution Division

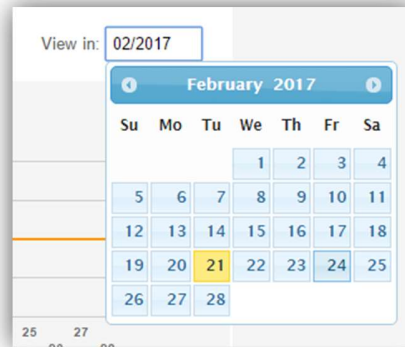


Figure 1.2-10 Snapshot of date selection

03. History Page: as shown in Figure 1.2-11, the left hand side of the figure illustrates the geographical location and the equipment on the user site; whereas the right hand side of the figure illustrates the condition of power generation in real time environment.



AXView Solution for Solar Energy User Manual for Administrator

Software & Solution Division

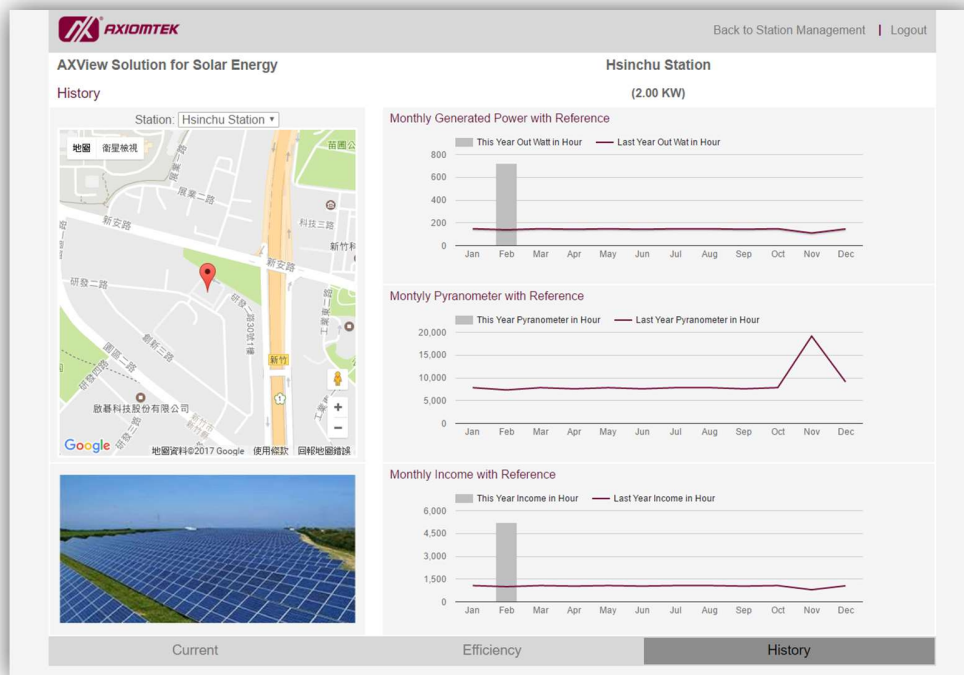


Figure 1.2-11 Snapshot of “Efficiency” page of AXView solution website

a. The meaning of charts shown at the upper right hand corner of “History” page

⊙ “Monthly Generated Power with Reference”:

The vertical bar refers to the accumulative power volume in each month of the year. The curve refers to the average power volume in each month in the past.

⊙ “Monthly Pyranometer with Reference”:

The vertical bar refers to the accumulative sunlight volume in each month of the year. The curve refers to the average sunlight volume in each month in the past.



AXView Solution for Solar Energy User Manual for Administrator

Software & Solution Division

⦿ “Monthly Income with Reference”:

The vertical bar refers to the accumulative profit in each month of the year. The curve refers to the average profit in each month in the past.

- D. **Settings:** as shown in Figure 1.2-12, this tab opens another web page for changing the login password of user.

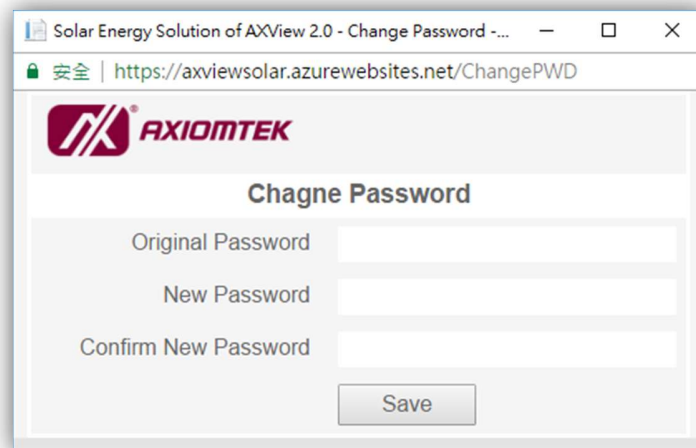


Figure 1.2-12 Snapshot of “Change Password” page of AXView solution website

- E. **Logout:** this tab is for logging out of the system.