



# **AXView Solution for Solar Energy**

## **User Manual for Group User**

### **1.0.0.1**

**Published by Software & Solution Division**

**Release Date: 2017/2/22**



# AXView Solution for Solar Energy User Manual for Group

Software & Solution Division

---

## Release Note

Version	Revised Date	Author	Description
1.0.0.1	2017/2/22	Mark Lu	- 1st release

## Table of Contents

I. System Management and Operation.....	1
● 1.1 Management Layers.....	1
● 1.2 Operation of each Tab Page of Website of AXView Solution .....	2
● 1.3 Operation of Hyperlink of Website of AXView Solution.....	10



# AXView Solution for Solar Energy User Manual for Group

Software & Solution Division

## I. System Management and Operation

### 1.1 Management Layers

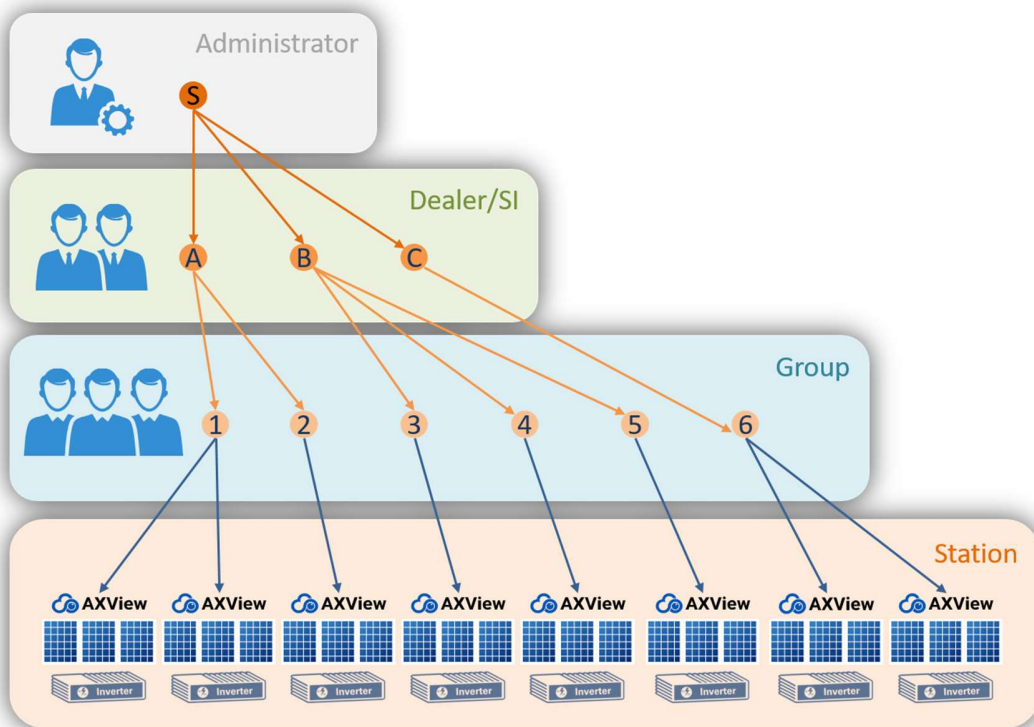


Diagram 1.1-1 Different roles played in the AXView solution

- A. Group User (frontend user of AXView solution – login from [HERE](#))**
- i. End users of dealer/SI are to play this role (the third layer in Diagram 1.1-1)
  - ii. Play in grasping the status of their own solar energy stations which can amount to a multiple number.



# AXView Solution for Solar Energy User Manual for Group

Software & Solution Division

## 1.2 Operation of each Tab Page of Website of AXView Solution

- A. **Current Page:** as shown in Figure 1.2-2, this page illustrates the geographical location and the equipment on the user site; whereas the right hand side of the figure illustrates the condition of power generation in real time environment.

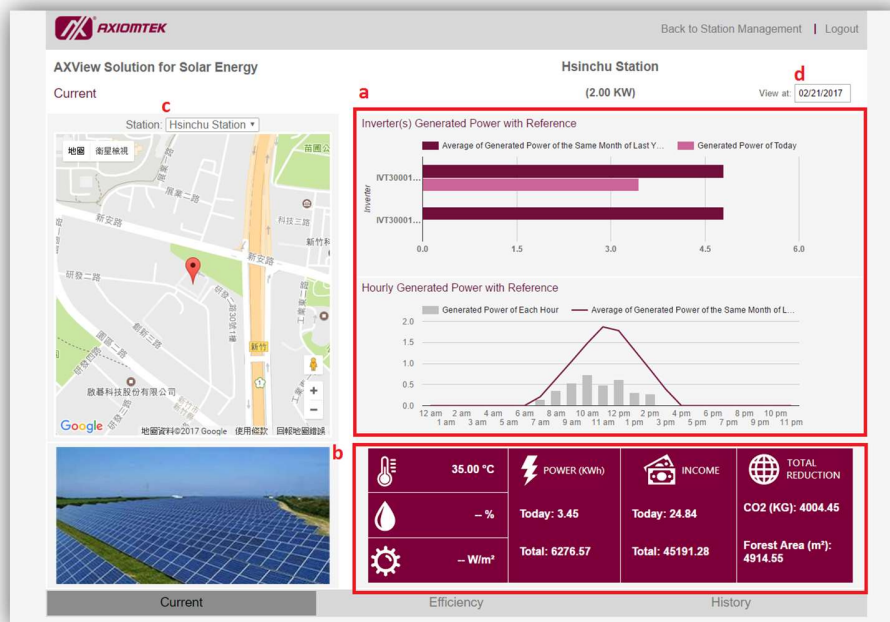


Figure 1.2-2 Snapshot of “Current” page of AXView solution website



# AXView Solution for Solar Energy User Manual for Group

Software & Solution Division

a. The meaning of charts shown at the upper right hand corner of "Current" page


⊙ "Inverter(s) Generated Power with Reference":


Dark color refers to the accumulative power volume measured at each inverter today. Light color refers to the daily average power volume measured at each inverter during the same months in last year.


⊙ "Hourly Generated Power with Reference":


The curve refers to the hourly average power volume in each hour during the same months in last year. Vertical bar refers to the accumulative power volume in each hour today.


b. The meaning of icons shown at the lower right hand corner of "Current" page


⊙ : Temperature in the environment at the site (optional)

⊙ : Humidity in the environment at the site (optional)

⊙ : Intensity of the sun light (optional)

⊙ : The accumulative power volume during today and in the past

⊙ : The profit from power generation during today and in the past (optional: if you sold the generated power.)

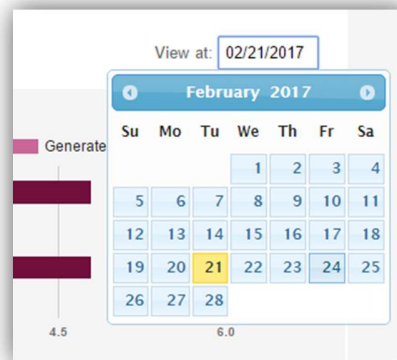
⊙ : The reduction of CO2 emission volume and area of forest cut-down



## AXView Solution for Solar Energy User Manual for Group

Software & Solution Division

- due the use of solar power in the past
- c. You can change to browse status of another station by selecting station in the drop-down list of “Station” in upper left.
  - d. You can review condition of power generation of other day by selecting the date, which you want to review, in textbox of “View at” or key-in date in format of “MM/DD/YYYY”, as shown in Figure 1.2-3.



**Figure 1.2-3 Snapshot of date selection**



# AXView Solution for Solar Energy User Manual for Group

Software & Solution Division

- B. Efficiency Page: as shown in Figure 1.2-4, the left hand side of the figure illustrates the geographical location and the equipment on the user site; whereas the right hand side of the figure illustrates the condition of power generation in real time environment.

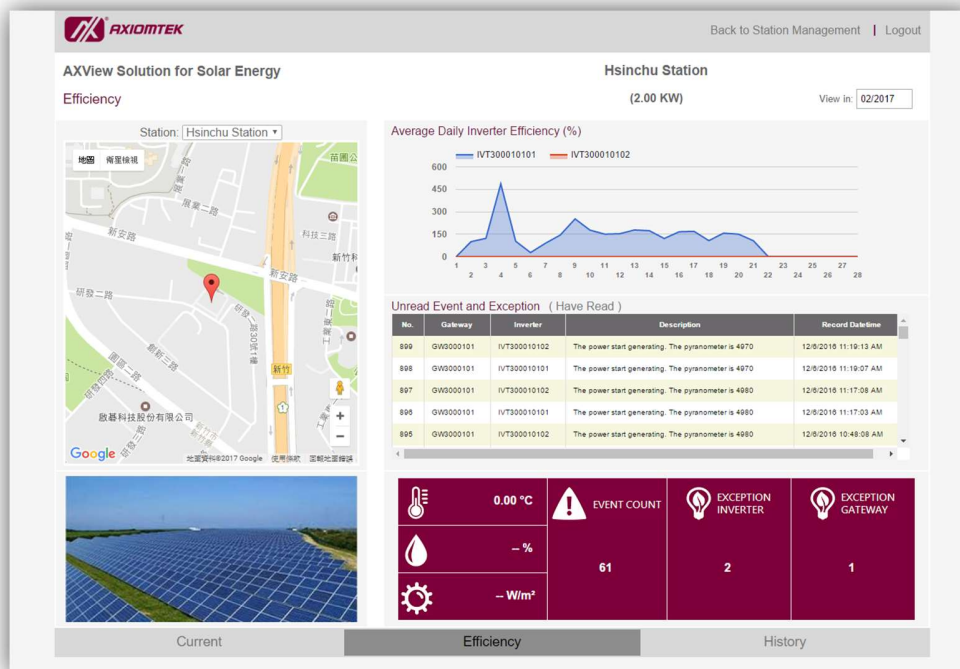


Figure 1.2-4 Snapshot of “Efficiency” page of AXView solution website

- a. The meaning of charts shown at the upper right hand corner of “Efficiency” page

⊙ “Average Daily Inverter Efficiency (%)”:

The curve shown at the upper right hand corner represents the daily conversion



# AXView Solution for Solar Energy User Manual for Group

Software & Solution Division

efficiency of the power generation in this month.

☉ “Unread Event and Exception”:

The table shown in the middle part of the right hand side represents the records of abnormal incidents been detected by the system. And clicking “Delete”, the message you selected will be moved to “Have Read” page.


☉ “(Have Read)”:

This hyperlink directs to “Have Read” page and shows the event messages that you have read. As shown in Figure 1.2-5.

No.	Gateway	Inverter	Description	Record Datetime
877	GW3000101	IVT300010102	The power stop generating. The pyranometer is 5010	11/29/2018 6:51:28 PM
856	GW3000101	IVT300010101	The power stop generating. The pyranometer is 4680	11/10/2018 6:15:57 PM
853	GW3000101	IVT300010102	The power stop generating. The pyranometer is 4650	11/10/2018 6:14:20 PM
845	GW3000101	IVT300010102	The power stop generating. The pyranometer is 4650	11/10/2018 6:11:04 PM
829	GW3000101	IVT300010102	The power start generating. The pyranometer is 4910	11/10/2018 4:23:08 PM
828	GW3000101	IVT300010101	The power start generating. The pyranometer is 4910	11/10/2018 4:23:00 PM

**Figure 1.2-5 Snapshot of “Have Read” page of AXView solution**

b. The meaning of icons shown at the lower right hand corner of “Efficiency” page

- ☉ : Temperature in the environment at the site (optional)










## AXView Solution for Solar Energy User Manual for Group

Software & Solution Division

---

- : Humidity in the environment at the site (optional)
  - : Intensity of the sun light (optional)
  -  **EVENT COUNT**: The counting of abnormal incidents
  -  **EXCEPTION INVERTER**: The counting of abnormal incidents at the inverter, including that of the start time of power generation, the end time of power generation, and definitions of abnormal incidents at the inverter
  -  **EXCEPTION GATEWAY**: The counting of abnormal incidents coming from the Gateway, and detection of abnormal temperature of CPU and system during the operation of the ICO300
- c. You can change to browse status of another station by selecting station in the drop-down list of “Station” in upper left.
- d. You can review condition of power generation of other month by selecting the month, which you want to review, in textbox of “View in” or key-in date in format of “MM/YYYY”. As shown in Figure 1.2-6.



# AXView Solution for Solar Energy User Manual for Group

Software & Solution Division

---

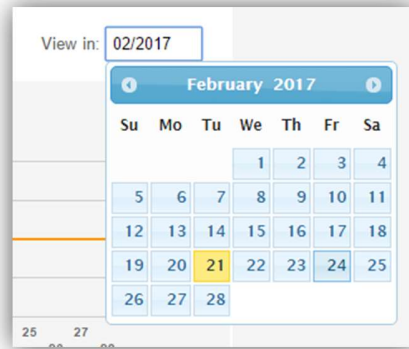


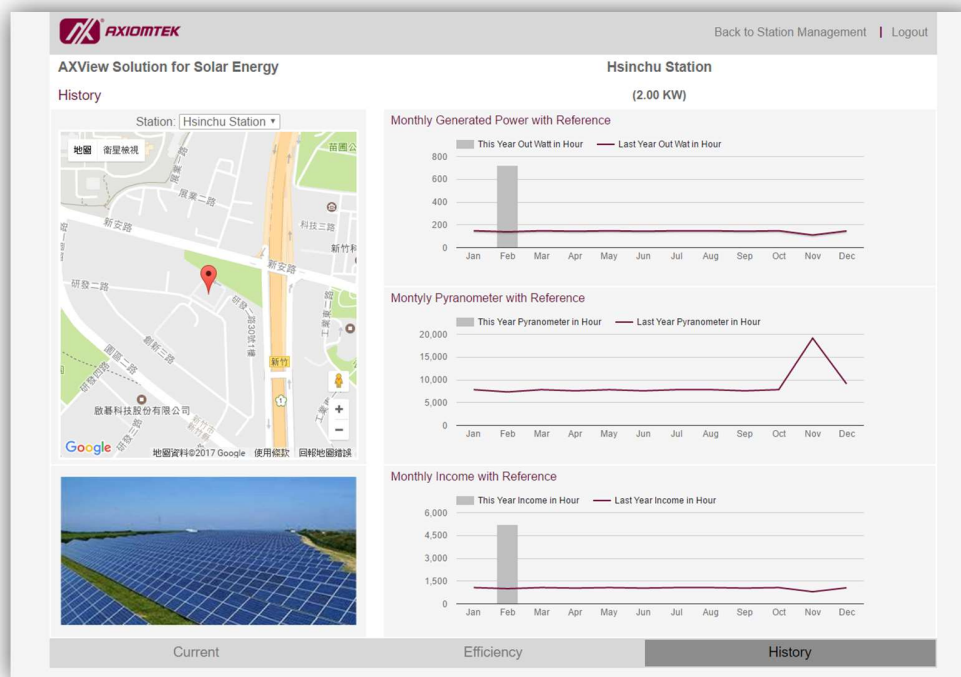
Figure 1.2-6 Snapshot of date selection

- C. **History Page:** as shown in Figure 1.2-7, the left hand side of the figure illustrates the geographical location and the equipment on the user site; whereas the right hand side of the figure illustrates the condition of power generation in real time environment.



# AXView Solution for Solar Energy User Manual for Group

Software & Solution Division



**Figure 1.2-7 Snapshot of “Efficiency” page of AXView solution website**

a. The meaning of charts shown at the upper right hand corner of “History” page

⊙ “Monthly Generated Power with Reference”:

The vertical bar refers to the accumulative power volume in each month of the year. The curve refers to the average power volume in each month in the past.

⊙ “Monthly Pyranometer with Reference”:

The vertical bar refers to the accumulative sunlight volume in each month of the year. The curve refers to the average sunlight volume in each month in the past.



# AXView Solution for Solar Energy User Manual for Group

Software & Solution Division

◎ “Monthly Income with Reference”:

The vertical bar refers to the accumulative profit in each month of the year. The curve refers to the average profit in each month in the past.

## 1.3 Operation of Hyperlink of Website of AXView Solution



- A. **Change Password:** as shown in Figure 1.2-8, this tab opens another web page for changing the login password of user.

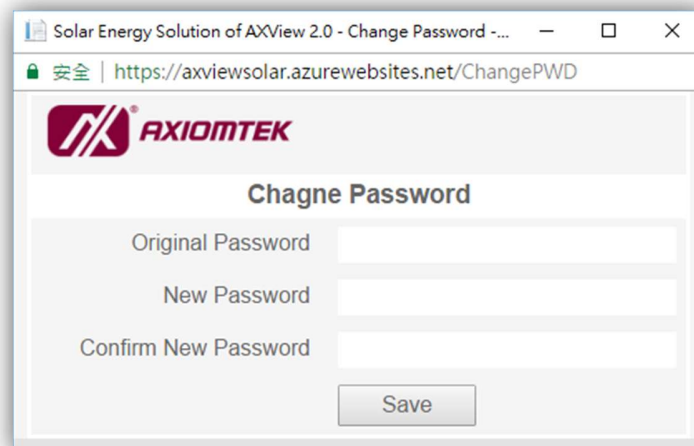


Figure 1.2-8 Snapshot of “Change Password” page of AXView solution website



## AXView Solution for Solar Energy User Manual for Group

Software & Solution Division

---

- B. **Contact Us:** this hyperlink is for writing an email to your system integrator.
- C. **Logout:** this hyperlink is for logging out of the system.