



AXView Solution for Solar Energy User Manual for Dealer/SI Management and Operation 1.0.0.1

Published by Software & Solution Division

Release Date: 2017/2/22



AXView Solution for Solar Energy User Manual for Dealer/SI

Software & Solution Division

Release Note

Version	Revised Date	Author	Description
1.0.0.1	2017/2/22	Mark Lu	- 1st release

Table of Contents

I. System Management and Operation.....	1
● 1.1 Management Layers.....	1
● 1.2 Operation of each Tab Page of Website of AXView Solution	2



AXView Solution for Solar Energy User Manual for Dealer/SI

Software & Solution Division

I. System Management and Operation

1.1 Management Layers

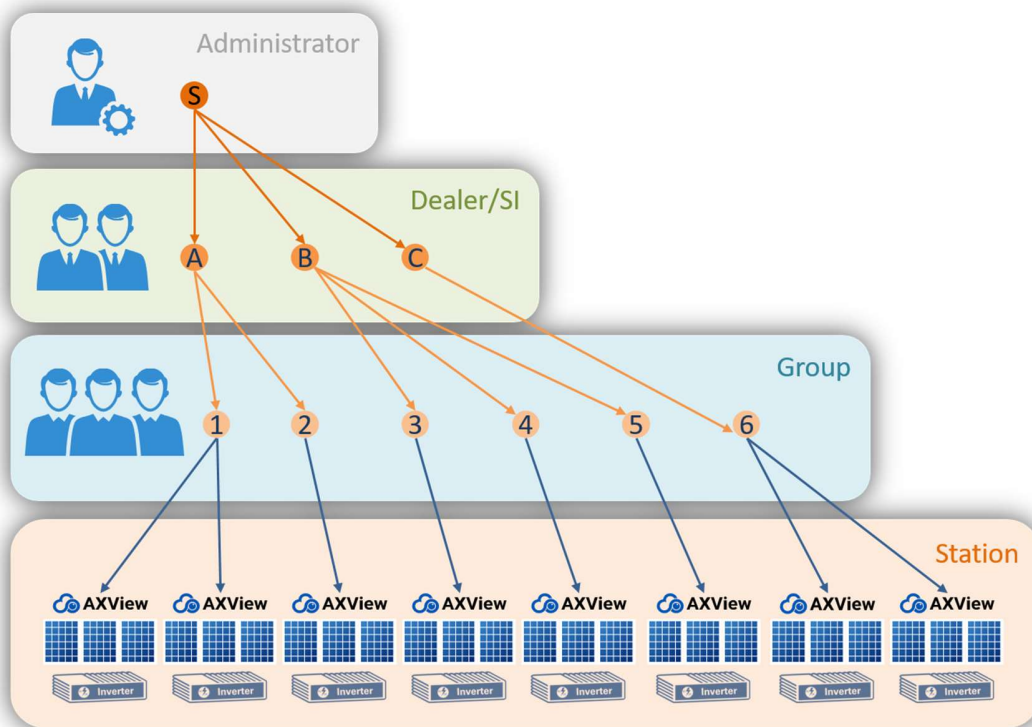


Diagram 1.1-1 Different roles played in the AXView solution

A. Dealer/SI (backend user of AXView solution – login from [HERE](#))

- i. Dealer/SI is to play this role (the second layer in Diagram1.1-1)
- ii. Play in managing group users and in conducting routine on-line maintenance.



AXView Solution for Solar Energy User Manual for Dealer/SI

Software & Solution Division

1.2 Operation of each Tab Page of Website of AXView Solution

A. Survey: as shown in Figure 1.2-1, this tab page provides for managing group user.

The screenshot displays the 'Group Mgmt' tab page. At the top, there is a navigation bar with the AXIOMTEK logo and a 'Contact Us' link. Below the navigation bar are tabs for 'Group Mgmt', 'Station Mgmt', 'Group Create', 'Settings', and 'Logout'. The main content area is titled 'Group Management' and features a table with the following data:

Select	Group ID	Contact	TEL	Ext.
	8 0	張	0982	

Below the table is a 'Detail Information' section with a '(Disable List)' link. It includes a '* Group ID' field with the value '89'. Underneath is a 'Contact Window' section with fields for 'Name' (張), 'TEL' (0982), and 'Ext.'. At the bottom, there are two buttons: 'Disable' (marked with a red 'i') and 'Save' (marked with a red 'ii').

Figure 1.2-1 Snapshot of “Group Mgmt” tab page of AXView solution website

- i. Disable: suspend a group to use this solution.
- ii. Save: modify data of group user. (* **ONLY** Group ID could not be modified.)



AXView Solution for Solar Energy User Manual for Dealer/SI

Software & Solution Division

- iii. Disable List: as shown in Figure 1.2-2
 - 01. List all be suspended group.
 - 02. You can do reactivation to a group user by selecting that Group ID and clicking “Activate”.

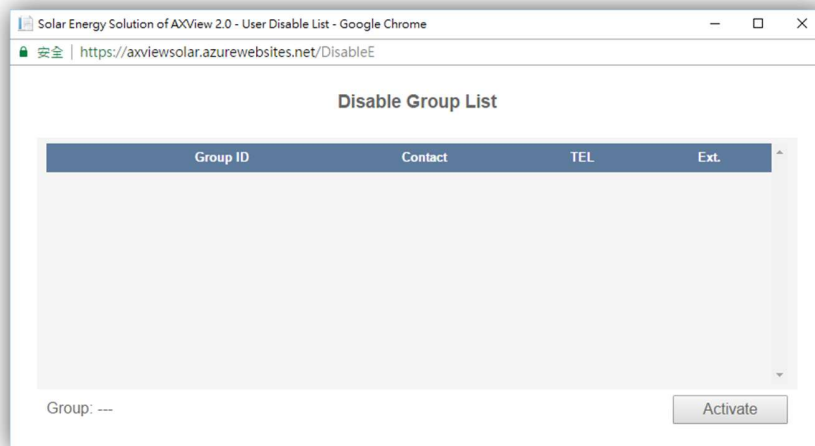


Figure 1.2-2 Snapshot of “Disable Group List” page of AXView solution website



AXView Solution for Solar Energy User Manual for Dealer/SI

Software & Solution Division

- B. Station Mgmt: as shown in Figure 1.2-3, this tab page shows today status of station of the group user you selected.

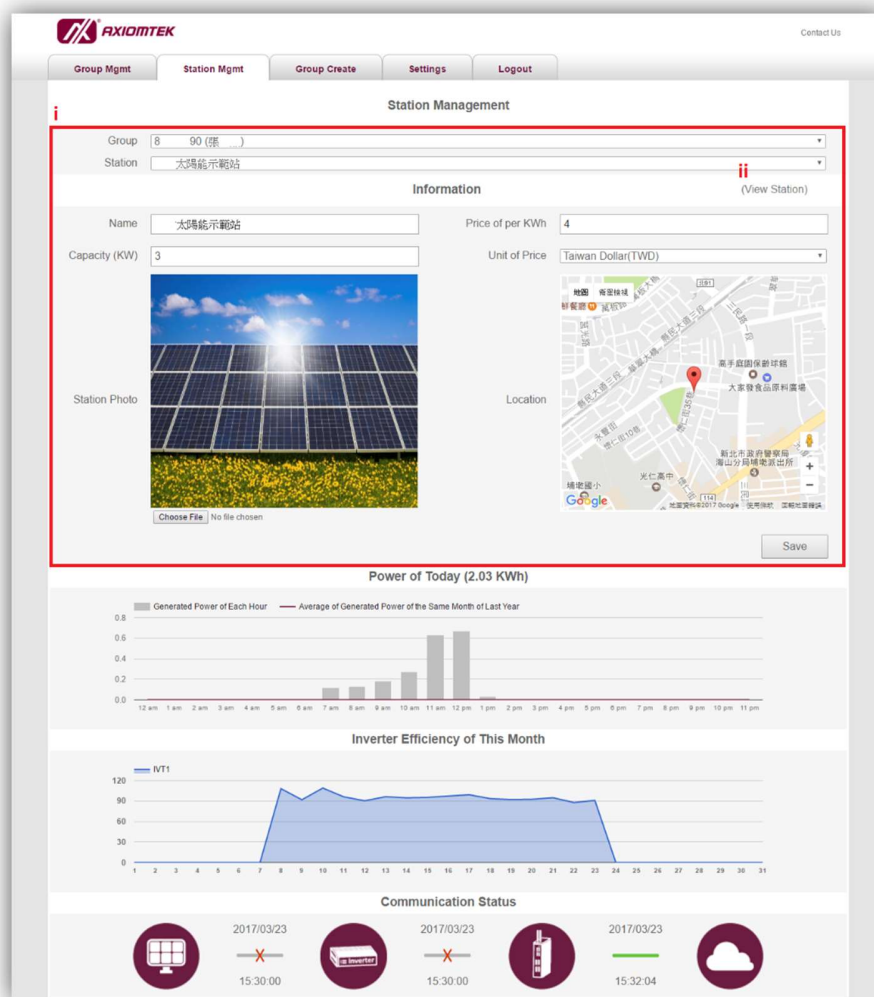


Figure 1.2-3 Snapshot of “Station Mgmt” tab page of AXView solution website



AXView Solution for Solar Energy User Manual for Dealer/SI

Software & Solution Division

- i. Select a “Group” first, then choose a “Station”, that you want to check, in drop-down list, then you can browse status of power generation and efficiency of inverter and modify information of some station that belongs to the group you selected. And you can modify items as follows:
 01. Station Name
 02. Price of per KWh
 03. Station Photo (upload a photo)
 04. Location (just move map and click location you want)
- ii. If you want to browse more detail information/status of this station, you could click “View Station”.
 01. Current Page: as shown in Figure 1.2-4, this page illustrates the geographical location and the equipment on the user site; whereas the right hand side of the figure illustrates the condition of power generation in real time environment.



AXView Solution for Solar Energy User Manual for Dealer/SI

Software & Solution Division

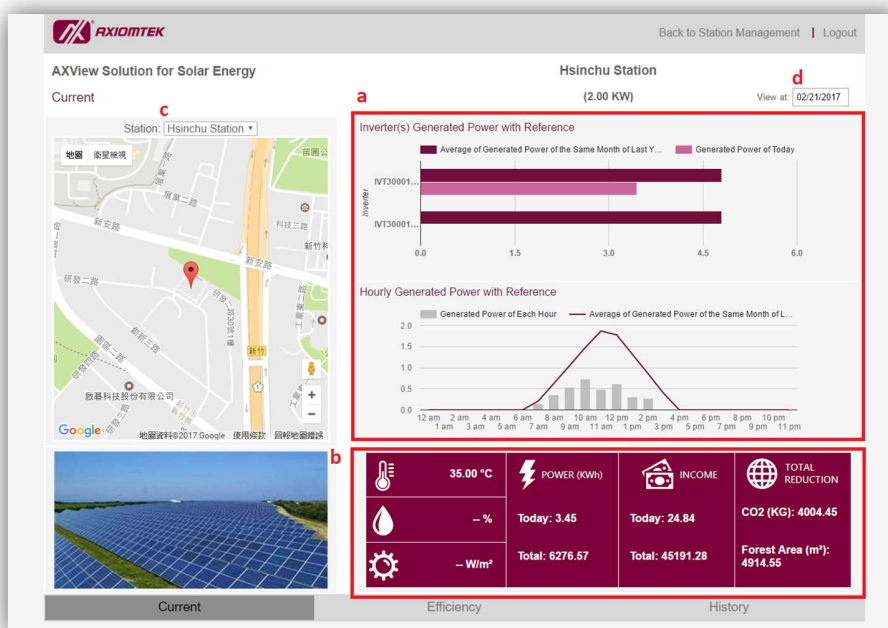


Figure 1.2-4 Snapshot of “Current” page of AXView solution website

a. The meaning of charts shown at the upper right hand corner of “Current” page

⊙ “Inverter(s) Generated Power with Reference”:

Light color refers to the accumulative power volume measured at each inverter today. Dark color refers to the daily average power volume measured at each inverter during the same months in last year.

⊙ “Hourly Generated Power with Reference”:

The curve refers to the hourly average power volume in each hour during the same months in last year. Vertical bar refers to the accumulative power volume in









AXView Solution for Solar Energy User Manual for Dealer/SI

Software & Solution Division

each hour today.

b. The meaning of icons shown at the lower right hand corner of “Current” page

- ① : Temperature in the environment at the site (optional)
- ① : Humidity in the environment at the site (optional)
- ① : Intensity of the sun light (optional)
- ① : The accumulative power volume during today and in the past
- ① : The profit from power generation during today and in the past (optional: if you sold the generated power.)
- ① : The reduction of CO2 emission volume and area of forest cut-down due the use of solar power in the past

c. You can change to browse status of another station by selecting station in the drop-down list of “Station” in upper left.



AXView Solution for Solar Energy User Manual for Dealer/SI

Software & Solution Division

- d. You can review condition of power generation of other day by selecting the date, which you want to review, in textbox of “View at” or key-in date in format of “MM/DD/YYYY”, as shown in Figure 1.2-5.

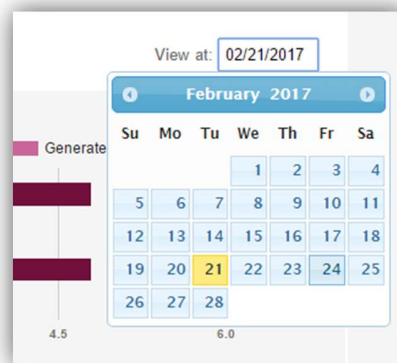


Figure 1.2-5 Snapshot of date selection

02. Efficiency Page: as shown in Figure 1.2-6, the left hand side of the figure illustrates the geographical location and the equipment on the user site; whereas the right hand side of the figure illustrates the condition of power generation in real time environment.



AXView Solution for Solar Energy User Manual for Dealer/SI

Software & Solution Division

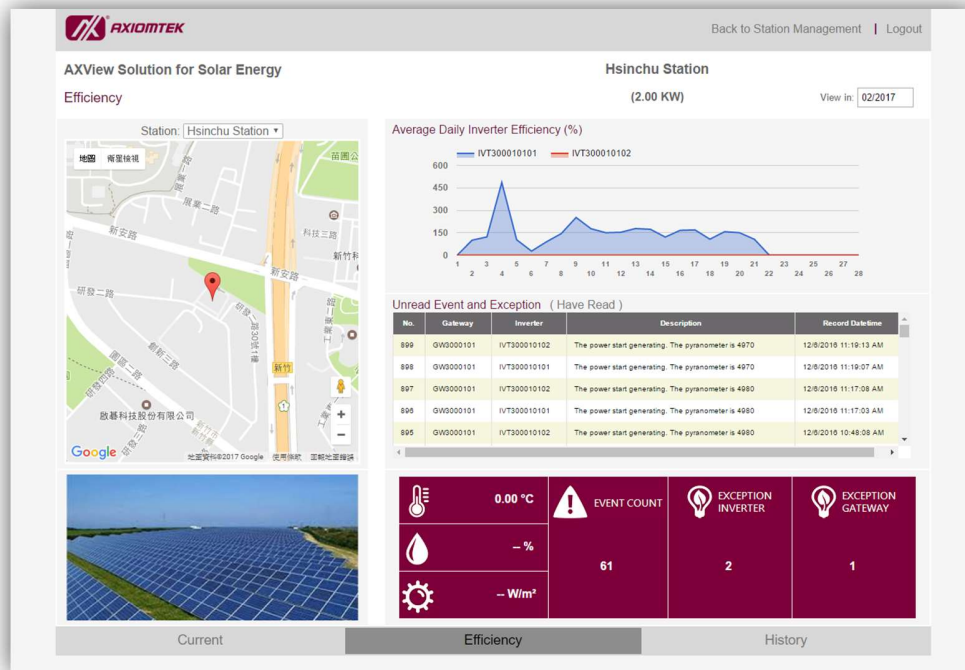


Figure 1.2-6 Snapshot of “Efficiency” page of AXView solution website

a. The meaning of charts shown at the upper right hand corner of “Efficiency” page

① “Average Daily Inverter Efficiency (%)”:

The curve shown at the upper right hand corner represents the daily conversion efficiency of the power generation in this month.

② “Unread Event and Exception”:

The table shown in the middle part of the right hand side represents the records



AXView Solution for Solar Energy User Manual for Dealer/SI

Software & Solution Division

of abnormal incidents been detected by the system. And clicking “Delete”, the message you selected will be moved to “Have Read” page.




⦿ “(Have Read)”:

This hyperlink directs to “Have Read” page and shows the event messages that you have read. As shown in Figure 1.2-7.

No.	Gateway	Inverter	Description	Record Datetime
877	GW3000101	IVT300010102	The power stop generating. The pyranometer is 5010	11/29/2016 6:51:28 PM
858	GW3000101	IVT300010101	The power stop generating. The pyranometer is 4880	11/10/2016 6:15:57 PM
853	GW3000101	IVT300010102	The power stop generating. The pyranometer is 4650	11/10/2016 6:14:20 PM
845	GW3000101	IVT300010102	The power stop generating. The pyranometer is 4650	11/10/2016 6:11:04 PM
829	GW3000101	IVT300010102	The power start generating. The pyranometer is 4910	11/10/2016 4:23:06 PM
828	GW3000101	IVT300010101	The power start generating. The pyranometer is 4910	11/10/2016 4:23:00 PM

Figure 1.2-7 Snapshot of “Have Read” page of AXView solution




b. The meaning of icons shown at the lower right hand corner of “Efficiency” page

- ⦿ : Temperature in the environment at the site (optional)
- ⦿ : Humidity in the environment at the site (optional)
- ⦿ : Intensity of the sun light (optional)



AXView Solution for Solar Energy User Manual for Dealer/SI

Software & Solution Division

- 
EVENT COUNT: The counting of abnormal incidents
 - 
EXCEPTION INVERTER: The counting of abnormal incidents at the inverter, including that of the start time of power generation, the end time of power generation, and definitions of abnormal incidents at the inverter
 - 
EXCEPTION GATEWAY: The counting of abnormal incidents coming from the Gateway, and detection of abnormal temperature of CPU and system during the operation of the ICO300
- c. You can change to browse status of another station by selecting station in the drop-down list of “Station” in upper left.
- d. You can review condition of power generation of other month by selecting the month, which you want to review, in textbox of “View in” or key-in date in format of “MM/YYYY”. As shown in Figure 1.2-8.

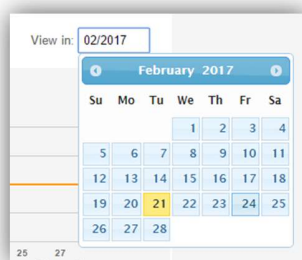


Figure 1.2-8 Snapshot of date selection



AXView Solution for Solar Energy User Manual for Dealer/SI

Software & Solution Division

03. History Page: as shown in Figure 1.2-9, the left hand side of the figure illustrates the geographical location and the equipment on the user site; whereas the right hand side of the figure illustrates the condition of power generation in real time environment.

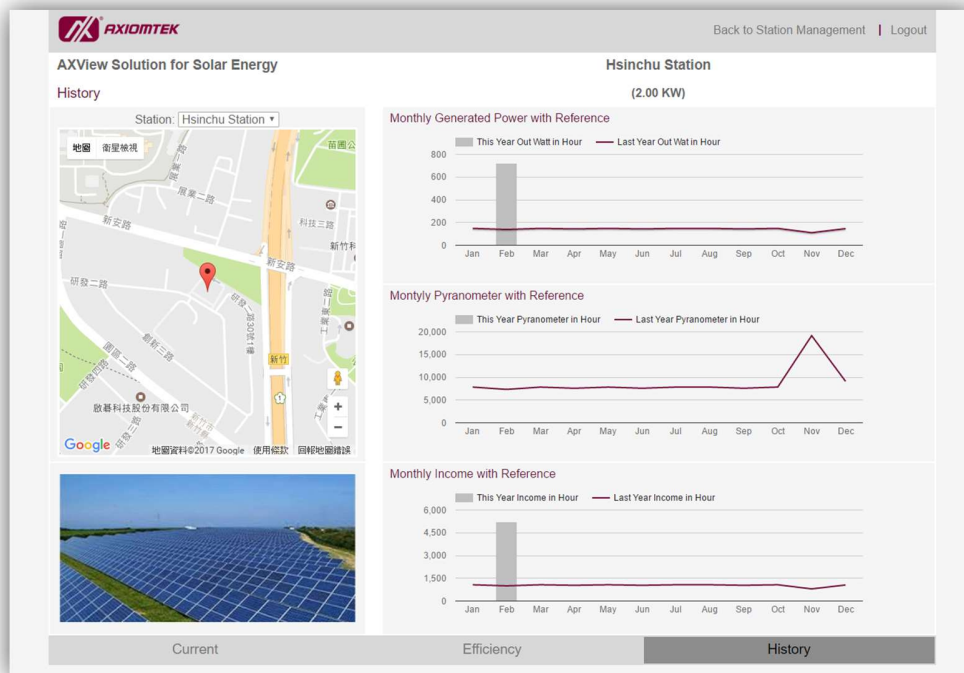


Figure 1.2-9 Snapshot of “Efficiency” page of AXView solution website

- a. The meaning of charts shown at the upper right hand corner of “History” page

⊙ “Monthly Generated Power with Reference”:

The vertical bar refers to the accumulative power volume in each month of the



AXView Solution for Solar Energy User Manual for Dealer/SI

Software & Solution Division

year. The curve refers to the average power volume in each month in the past.

⊙ “Monthly Pyranometer with Reference”:

The vertical bar refers to the accumulative sunlight volume in each month of the year. The curve refers to the average sunlight volume in each month in the past.

⊙ “Monthly Income with Reference”:

The vertical bar refers to the accumulative profit in each month of the year. The curve refers to the average profit in each month in the past.

- C. **Group Create:** as shown in Figure 1.2-10, this tab page provides for creating a group user account (*Group ID will be login ID for group user to login website of AXView solution and must be eight characters in numbers)

Figure 1.2-10 Snapshot of “Create Group” page of AXView solution website



AXView Solution for Solar Energy User Manual for Dealer/SI

Software & Solution Division

- D. **Settings:** as shown in Figure 1.2-12, this tab opens another web page for changing the login password of user.

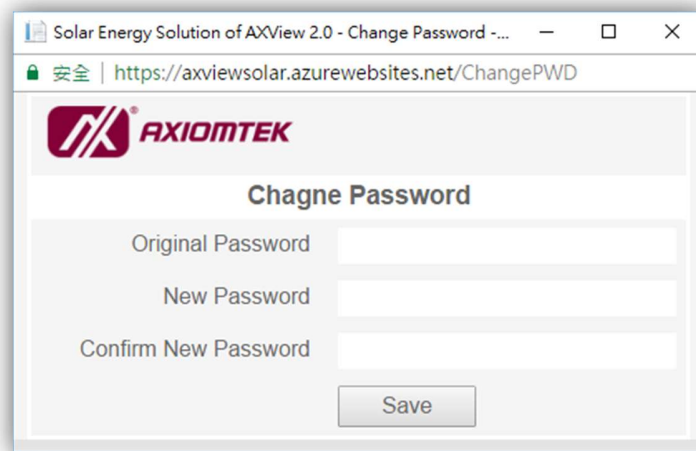


Figure 1.2-11 Snapshot of “Change Password” page of AXView solution website

- E. **Logout:** this tab is for logging out of the system.