

OPS300-310 Quick Installation Guide

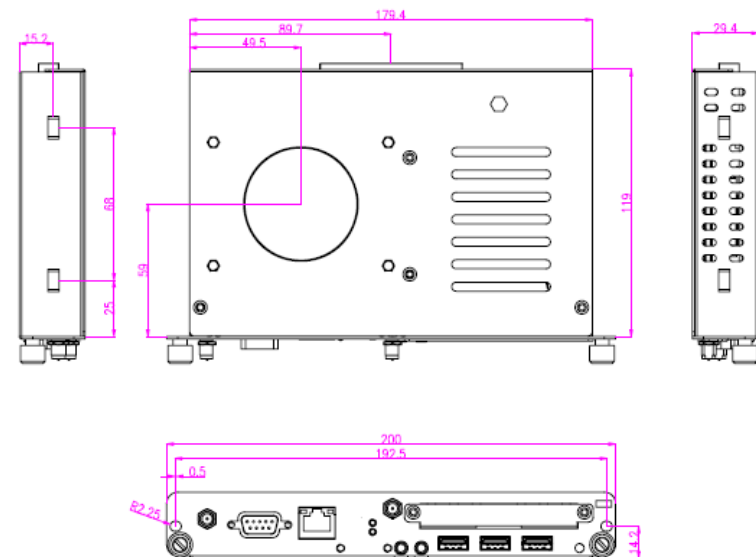
Checklist

- ✓ OPS module x 1
- ✓ Driver Disc x 1
- ✓ M4 x 6 screw x 2
- ✓ M2 x 3 screw x 1
- ✓ Quick Installation Guide x1
- ✓ M3 x 4screw x 1

Note: Please contact your local vendors if any damaged or missing items. DO NOT apply power to the board if there is any damaged component.

Please refer to the product information CD for the complete user's manual, drivers and utilities. User's manual and related documents are in Acrobat PDF format.

Dimensions



Installing the Mini PCIe & M.2 cards

The OPS300 series provides one Mini card slot & one M.2 E Key to support mSATA/ wireless LAN cards, please refer to the following instructions and illustration.

Step 1 Loosen the screws per illustrated.



Step 2 Then open the cover carefully.



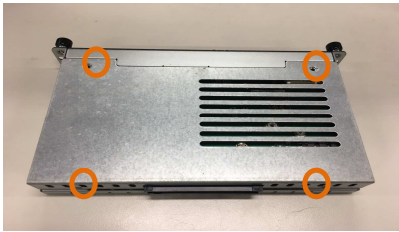
Step 3 You can find the position of Mini PCIe & M.2 slot, please insert it then fasten screw by yourself.



Step 4 Fasten all of screws with bracket to finish installation.

Installing the Memory Module

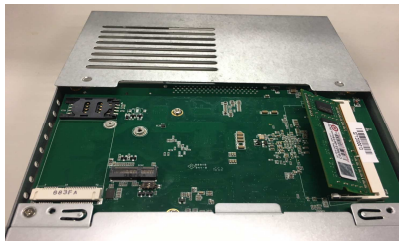
Step 1 Loosen the screws on the rear of chassis as illustrated.



Step 2 After losing the screws, extract the rear of chassis out of the module.



Step 3 Place the memory module into the socket and press it firmly. The socket latches are levered upwards and clipped on to the edges of the DIMM.



Step 4 The DRAM installation is finished, please fasten all of screws with bracket.

Installing the HDD/ SSD

The OPS300 series provides one 2.5" SATA HDD tray to install 2.5" HDD. When please refer to the following instructions and illustration

Step 1 Loosen the screws per illustrated.



Step 2 Please refer to the below photo to connect the target 2.5" HDD/SSD with HDD's bracket.



Step 3 Then plug HDD drive in to HDD connector then fasten two screws of the HDD cover bracket

