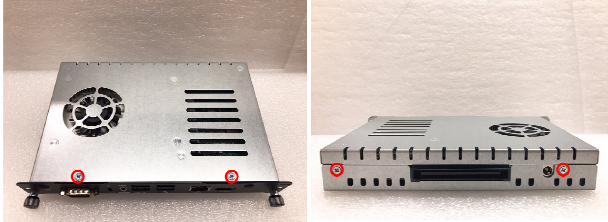
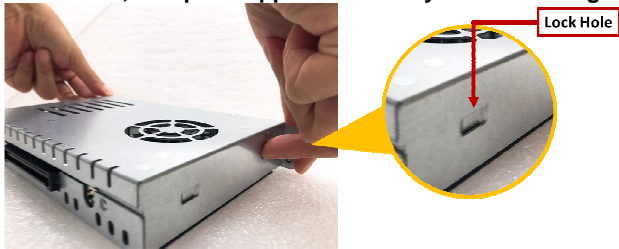


## Wireless Module (M.2 Key E Card)

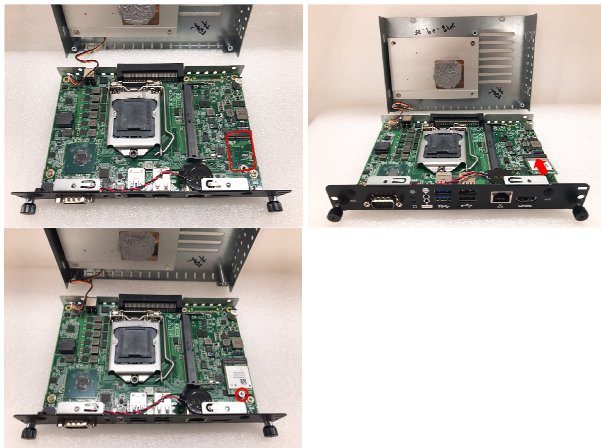
Step 1 Locate screws at the chassis and loosen four screws.



Step 2 Hold the system with your middle fingers at the Lock Hole, and use your thumbs press enough force on the front panel, meanwhile; lift up the upper case with your middle fingers.



Step 3 Slowly insert the M.2 Key E card into the M.2 slot until it is fully inserted. Then secure the M.2 Wi-Fi Module to the carrier.



## OPS500-520-H Quick Installation Guide

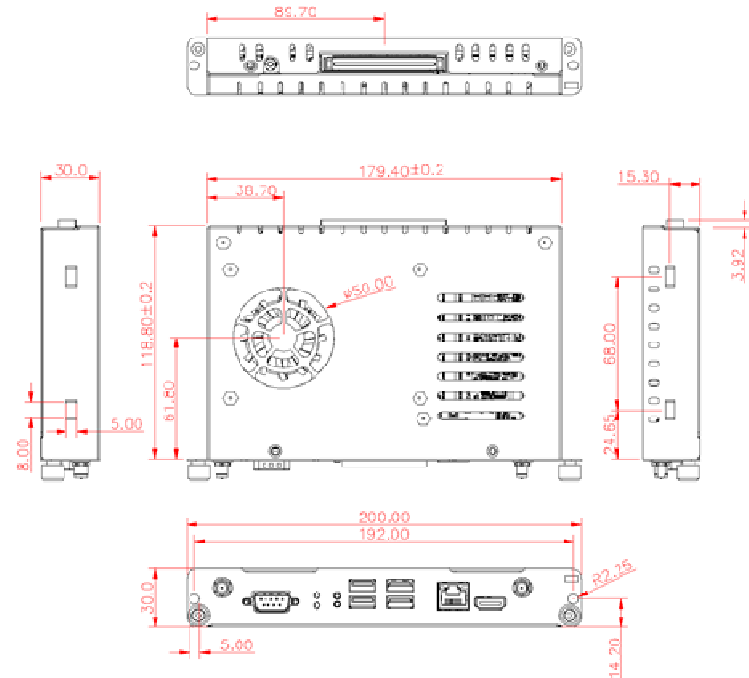
### Checklist

- ✓ OPS module x 1
- ✓ M4 x 6L screw x 2
- ✓ Quick Installation Guide x 1
- ✓ M.2 thermal pad x 1
- ✓ Driver Disc x 1
- ✓ M3 x 4L screw x 2
- ✓ Thermal Grease x 1

**Note:** Please contact your local vendors if any damaged or missing items. DO NOT apply power to the board if there is any damaged component.

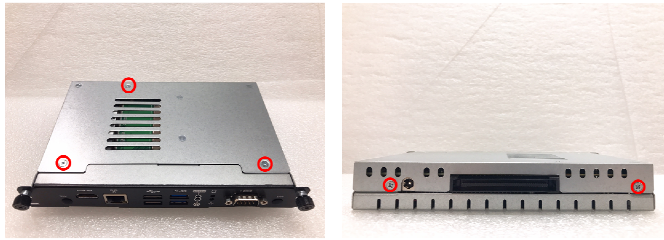
Please refer to the product information CD for the complete user's manual, drivers and utilities. User's manual and related documents are in Acrobat PDF format.

### Dimensions

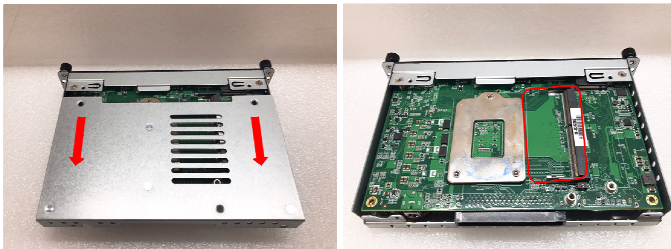


## DDR4 SO-DIMM DRAM Installation (SO-DIMM1)

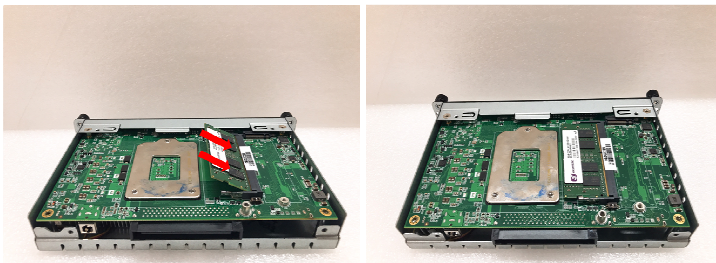
Step 1 Turn the system upside down to locate screws at the chassis as red marked and loosen five screws.




Step 2 Slide the bottom chassis out of the module, and locate the SO-DIMM socket on the board.



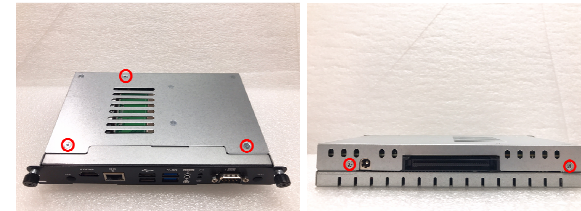
Step 3 Place the memory module into the socket and press it firmly. The socket latches are levered upwards and clipped on to the edges of the SO-DIMM.



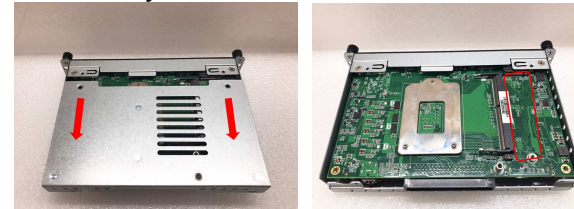
 **Note:** Please be informed that you can get more detail information in OPS500-520-H user's manual.

## M.2 SSD Installation

Step 1 Turn the system upside down to locate screws at the chassis as red marked and loosen five screws.



Step 2 Slide the bottom chassis out of the module, and locate the M.2 2280 Key M slot on the board.



Step 3 Place the M.2 SSD card into the socket and press it firmly. Then secure the M.2 SSD card to the carrier by tightening up the one M3\*4L pan head screw to the marked, then apply the M.2 thermal pad on the M.2 2280 Key M SSD card.

