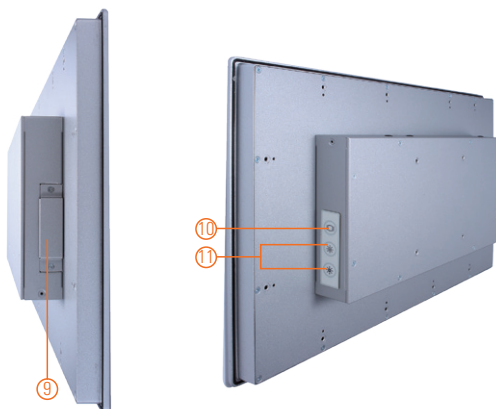
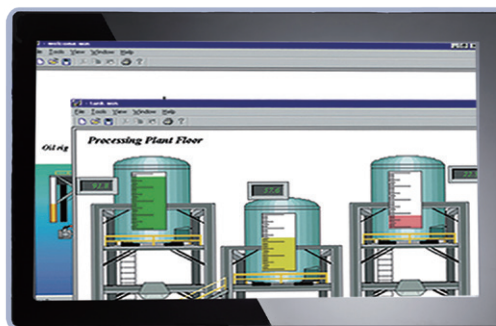


# GOT3187WL-834-PCT

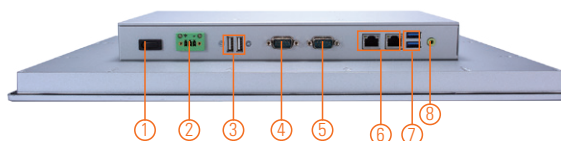
18.5" WXGA TFT Multi-touch Panel Computer with Intel® Celeron® Processor J1900 (0°C to +40°C)

## Features

- 18.5" WXGA projected capacitive multi-touch wide screen
- Fanless design with Intel® Celeron® Processor J1900
- 2.5" 7/9.5 mm SATA HDD & CFast™ or mSATA
- 3G, WLAN module & antennas (optional)
- 2 GbE LANs, 2 USB 3.0, 2 USB 2.0 and 2 COM
- IP65 aluminum front bezel
- Supports panel mount and optional VESA arm/desktop stand/wall mount
- 0°C to +40°C wide operating temperature range
- Adjust RS-232/422/485 setting via BIOS



▲ Rear view



1. Power switch
2. Terminal block for DC power input
3. USB 2.0 x 2
4. COM 1 (RS-232/422/485)
5. COM 2 (RS-232/422/485)
6. Ethernet x 2
7. USB 3.0 x 2
8. Audio (Line-out)
9. CFast™
10. Backlight switch
11. Brightness adjustment



## Introduction

The GOT3187WL-834-PCT adopts an 18.5-inch WXGA LCD and supports Intel® Bay Trail-D processor. The Lite rugged industrial panel PC supports low power Intel® Celeron® processor J1900. It also provides two PCI Express Mini card slots for 3G, wireless network connectivity. This 18.5" multi-touch panel computer is suitable for transportation, heavy-duty industry, smart factory automation, and oil pipe monitoring systems.

### 18.5-inch WXGA LCD with Projected Capacitive Multi-touch

The 18.5" WXGA touch panel PC supports 250 nits brightness and can display contents in HD resolution. With projected capacitive multi-touch screen, users can operate the device more directly and friendly. The hardness of touch glass surface is up to 7h for anti-scratch purpose.

### WLAN Antenna Supported (optional)

The IP65-rated industrial panel PC, GOT3187WL-834-PCT, provides two PCI Express Mini card slots and WLAN antennas for 3G and wireless network connectivity.

## Specifications

Front Bezel	IP65 front bezel	
LCD Panel	Display Type	18.5" WXGA TFT LCD
	Brightness (cd/m <sup>2</sup> )	250 nits
	Resolution	1366 x 768
Main System	CPU	Intel® Celeron® processor J1900 4C@2.0GHz (Bay Trail-D)
	Chipset	SoC Integrated
	System Memory	1 x 204-pin DDR3L-1333/1600 SO-DIMM, up to 8GB
	BIOS	AMI UEFI BIOS
	Storage	1 x 2.5" 7/9.5 mm SATA HDD 1 x CFast™ or 1 x mSATA
	Watchdog Timer	255 levels, 0 ~ 255 sec.
	Onboard Graphics	Integrated Intel® HD Graphics

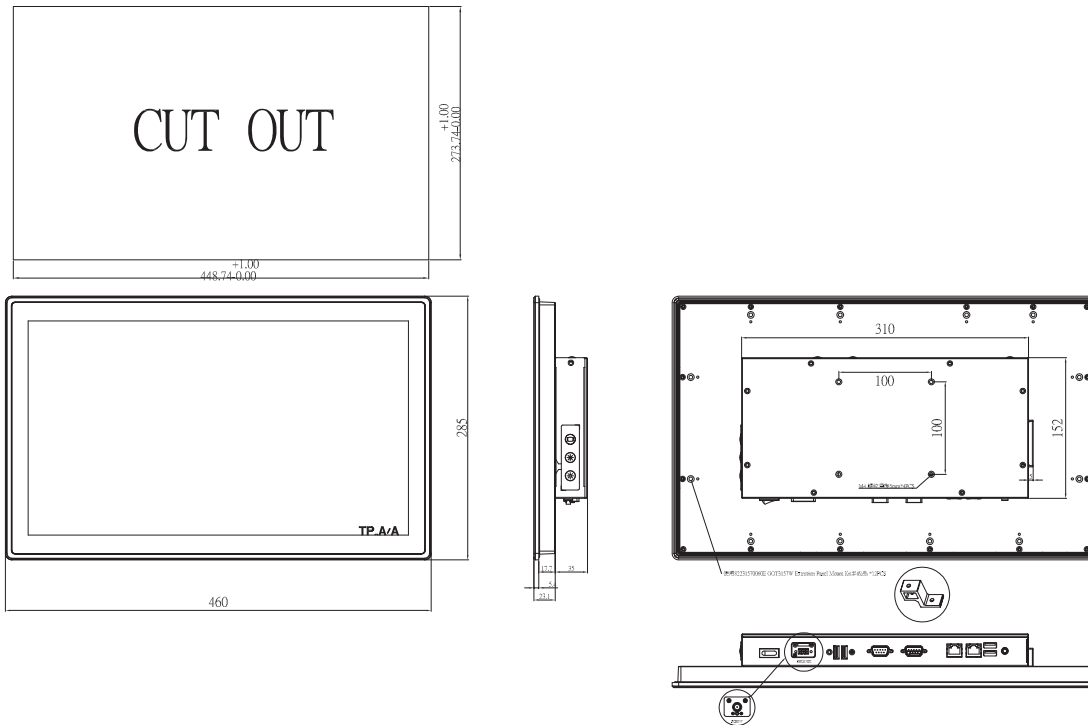
## Specifications

I/O Connector	2 x RS-232/422/485 (COM 1/2) 1 x switch for power on/off (ATX) 1 x audio (Line-out) 2 x USB 3.0 2 x USB 2.0 2 x 10/100/1000 Mbps Ethernet (Intel® i210AT)
Expansion Interface	1 x full-size PCI Express Mini Card slot with mSATA 1 x full-size PCI Express Mini Card slot with SIM
Touchscreen	Projected capacitive multi-touch
Power Supply	1. DC version: 12 ~ 36 VDC 2. AC version: 12 VDC 60W adapter
Power Consumption	48 W
Dimensions	460.8 mm (18.11") (W) x 58.5 mm (2.3") (D) x 285 mm (11.22") (H)
Packing Dimensions	600 mm (23.58") (W) x 195 mm (7.67") (D) x 500 mm (19.68") (H)
Weight (net/gross)	5.8 kg (12.8 lb)/8.2 kg (18.1 lb)
Environment	Operating temperature: 0°C ~ +40°C (+32°F ~ +104°F) Relative humidity: 20% ~ 90% @ +40°C; non-condensing Operation vibration: 1G, 10 ~ 500 Hz, random for CFast™
Certificate	CE



▲ Ideal for factory automation & self-service kiosk in retail

## Dimensions



## Ordering Information

GOT3187WL-834-PCT-J	18.5" WXGA TFT fanless touch panel computer with Intel® Celeron® J1900 2.0 GHz quad core processor, projected capacitive multi-touch screen and AC-DC 12 VDC power adapter (screw type connector)
GOT3187WL-834-PCT-DC	18.5" WXGA TFT fanless touch panel computer with Intel® Celeron® J1900 2.0 GHz quad core processor, projected capacitive multi-touch screen and 12 ~ 36 VDC terminal block connector

## Optional Accessories

82231770050E	GOT3177T-834 wall mount kit
50906D24000E	Adaptor 24V/120W, wire only, FSP120-AAAN3

## Optional EOS Installation

WE8S	
WES 7	

## Optional OS Installation

Windows® 8.1	
Windows® 7	

