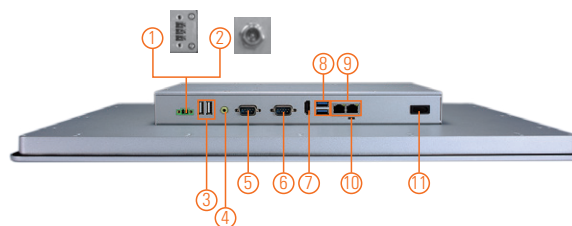
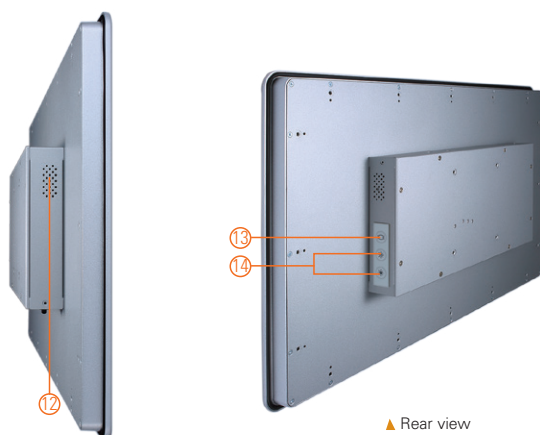
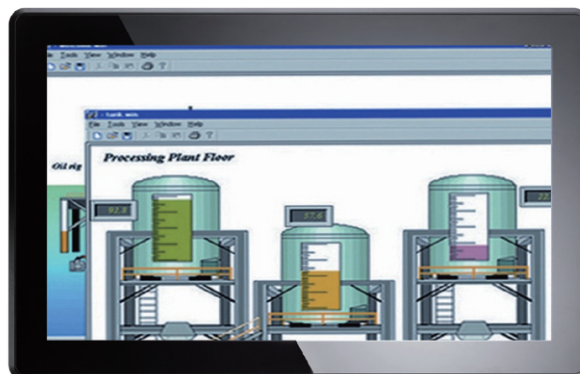


GOT3217WL-845-PCT

21.5" FHD TFT Multi-touch Panel Computer with Intel® Pentium® Processor N3710

Features

- 21.5" FHD 10-point multi-touch projected capacitive widescreen
- Fanless design with Intel® Pentium® processor N3710
- 2.5" 7/9.5 mm SATA HDD & mSATA
- 3G, WLAN module & antennas (optional)
- 2 GbE LANs, 2 USB 3.0, 2 USB 2.0 and 2 COM
- IP65-rated aluminum front bezel
- Supports panel mount and VESA mount (VESA arm/desktop stand/wall mount optional)
- Adjustable RS-232/422/485 setting via BIOS



- | | | |
|------------------------------------------|------------------------------|---------------------------|
| 1. Terminal block for DC power input or | 6. 1 x RS-232 | 11. Power Switch (ATX) |
| 2. Screw connector with AC power adapter | 7. 1 x HDMI | 12. Speaker |
| 3. 2 x USB 2.0 | 8. 2 x USB 3.0 | 13. Backlight switch |
| 4. 1 x Line-out | 9. 2 x LAN | 14. Brightness adjust +/- |
| 5. 1 x RS-232/422/485 | 10. AT/ATX selectable switch | |



Introduction

The GOT3217WL-845-PCT adopts a 21.5-inch FHD LCD and supports low power Intel® Pentium® processor N3710. It also provides two PCI Express Mini card slots for 3G, wireless network connectivity. This 21.5" multi-touch panel computer is suitable for transportation, heavy-duty industry, smart factory automation, and oil pipe monitoring systems.

21.5-inch FHD LCD with Projected Capacitive Multi-touch

The 21.5" FHD touch panel PC has a 21.5-inch FHD TFT LCD display with a 10-point multi-touch screen and 250 nits of brightness. The hardness of touch glass surface is up to 7h for anti-scratch purpose.

WLAN Antenna Supported (optional)

The GOT3217WL-845-PCT provides two PCI Express Mini card slots and WLAN antennas for 3G and wireless network connectivity.

Specifications

Front Bezel	IP65 front bezel	
LCD Panel	Display Type	21.5" FHD TFT LCD
	Brightness (cd/m ²)	250 nits
	Resolution	1920 x 1080
Main System	CPU	Intel® Pentium® processor N3710 4C @ 1.6 GHz (Braswell)
	Chipset	SoC integrated
	System Memory	1 x 204-pin DDR3L-1333/1600 SO-DIMM, up to 8GB
	BIOS	AMI UEFI BIOS
	Storage	1 x 2.5" SATA HDD (9.5 mm height) 1 x mSATA
	Watchdog Timer	255 levels, 0 to 255 sec.
	Onboard Graphics	Integrated Intel® HD Graphics

