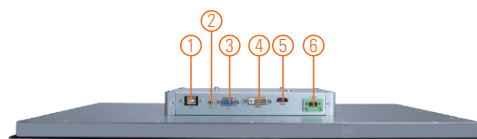
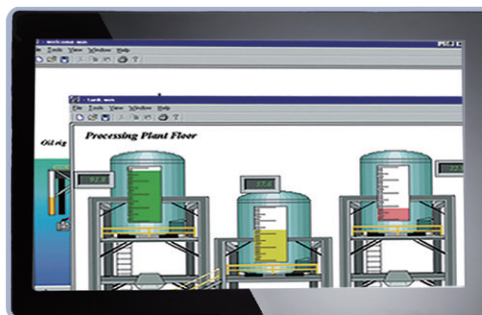
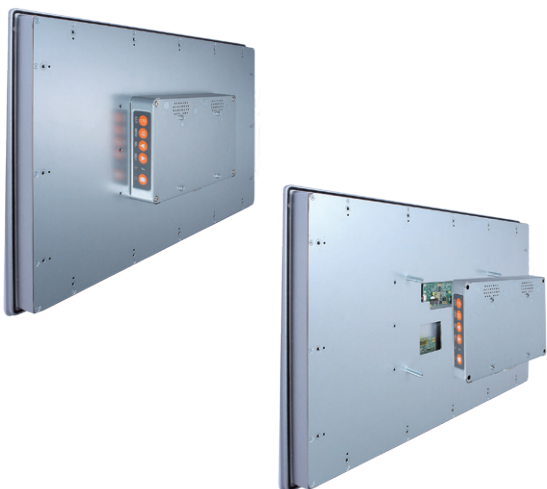


# P6187W-V2

18.5" WXGA TFT Widescreen Industrial LCD Monitor

## Features

- 18.5" WXGA TFT 450 nits LCD with projective capacitive multi-touch
- NEMA 4/12 (IP65) compliant flat panel monitor
- Supports panel mount, wall mount and VESA mount
- Full range screw-type (locked) AC-in or 24V DC-in (optional)
- VGA, HDMI and DVI with multi-signal inputs



1. T/S port
2. Line-in
3. VGA
4. DVI-D
5. HDMI
6. Screw type or Phoenix type power input

## Introduction

The P6187W-V2 is a slim-type industrial LCD monitor with flat front bezel design, which adopts 18.5-inch 300 nits full HD LCD display and supports multi-signal interfaces including DVI, VGA and HDMI. Featuring IP65 (NEMA 4)-rated front bezel, screw-type adaptor plug design, and 12/24V DC-in, the 18.5-inch P6187W-V2 is designed to fit for all kinds of industrial environments. Moreover, the P6187W-V2 supports panel mount, wall mount or VESA FPMPMI (Video Electronics Standards Association Flat Panel Monitor Physical Mounting Interface) mounting. With the compact mechanism design, the P6187W-V2 can be deployed easily in any space-limited place. It is especially suitable for POI/POS, HMI and all kinds of heavy-duty industrial fields.

## Specifications

Front Bezel	NEMA 4/12 (IP65)-compliant, flat front bezel	
Mounting	Panel mount, wall mount and VESA arm FPMPMI mounting (video electronics standards association Flat Panel monitor physical mounting interface)	
LCD Panel	Display	18.5" WXGA TFT LCD
	Max. Resolution	1366 x 768
	Max. Colors	16.7 M
	Active Area (mm)	409.8 x 230.4
	Pixel Pitch (mm)	0.3 x 0.3
	Response Time	5 ms
	Backlight	LED
	Backlight MTBF	50,000 hrs
	Viewing Angle (H/V)	170°/160°
	Contrast Ratio	1000 (TYP.)
Brightness (cd/m <sup>2</sup> )	450 nits	
Display Control	OSD (on screen display)	
Display Mode	VGA 640 x 350 (70 Hz), VGA 640 x 480 (60/72/75 Hz), VGA 720 x 400 (70 Hz), SVGA 800 x 600 (60/72/75 Hz), XGA 1024 x 768 (60/72/75 Hz), WXGA 1366 x 768 (60 Hz)	
Input Signal	VGA HDMI DVI (only for DVI-D) Touchscreen: USB interface	

## Specifications

I/O Connectors	1 x USB for touchscreen version 1 x Audio (Line-in) 1 x VGA 1 x HDMI 1 x DVI 1 x Screw type or Phoenix type power input
Power Adapter	Screw-type external AC/DC power adapter
Power Consumption	16W
Touchscreen	Multi-touch projective capacitive (optional)
Dimensions	460 mm (18.11") (W) x 285 mm (11.22") (D) x 58.45 mm (2.30") (H)
Packing Dimensions	575 mm (22.63") (W) x 170 mm (6.69") (D) x 460 mm (18.11") (H)
Weight (net/gross)	4.83 kg (10.63 lb)/6.33 kg (13.93 lb)
Operating Temperature	0°C to +55°C (+32°F to +131°F)
Relative Humidity	20% to 90% @ +40°C, non-condensing
Certifications	CE

## Packing List

1 x P6187W-V2 unit  
1 x VGA cable  
1 x USB cable or RS-232 cable (for resistive touch version only)  
1 x Audio cable  
1 x Driver CD

## Ordering Information

P6187W-V2		
AC Power	Panel mount monitor	
	Capacitive (USB)	P6187WPC-AC-U-US-EU-V2
	Glass	P6187WPG-AC-US-EU-V2
24VDC Power	Panel mount monitor	
	Capacitive (USB)	P6187WPC-24VDC-U-V2
	Glass	P6187WPG-24VDC-V2

## Optional Accessories

5946L203800E	HDMI cable
59461713400E	DVI cable
82261870070E	Panel mount kit
82231770050E	Wall mount kit
E221177116	Desktop stand for 15.6" to 21.5"

\*Specifications and certifications may vary based on different requirements.

## Dimensions

