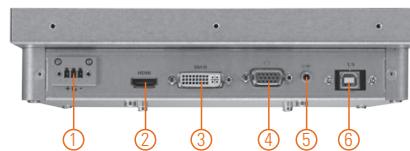
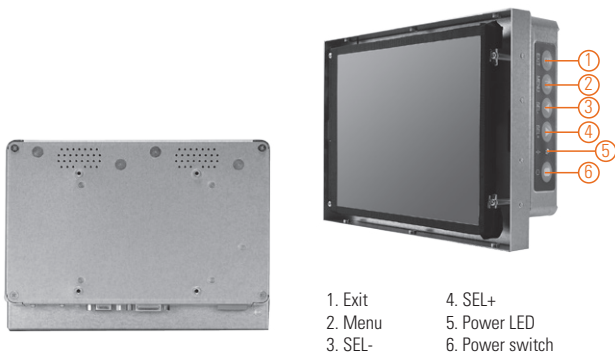
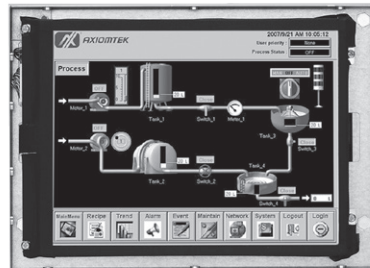


P6841O NEW

8.4" SVGA TFT Industrial Open Frame Monitor

Features

- 8.4" SVGA TFT LED backlight LCD
- Supports open frame mount, wall mount and VESA arm
- Resistive touchscreen
- Full range screw-type (locked) AC-in or 12V/24V DC-in (option)
- DVI-D, VGA and HDMI with multi-signal inputs
- Wide operating temperature supported



- | | |
|----------|-------------|
| 1. Power | 4. VGA |
| 2. HDMI | 5. Line-in |
| 3. DVI-D | 6. T/S port |

Introduction

The P6841O is an ultra slim industrial open frame monitor, which adopts 8.4-inch 450 nits SVGA LED backlight LCD display and supports multi-signal interfaces including DVI, VGA and HDMI. 12/24V DC-in means it is fit for all kinds of industrial environments. Moreover, the P6841O supports open frame mount, wall mount or VESA FPMPI mounting. With the compact mechanism design, users can enjoy free from space constraint. It is especially suitable for POI/POS, excellent HMI and all kinds of heavy-duty industrial fields.

Specifications

Front Bezel	Open frame monitor	
Mounting	Open frame mount, wall mount and VESA arm	
LCD Panel	Display	8.4" SVGA TFT LCD
	Max. Resolution	800 x 600
	Max. Colors	16.2 M
	Active Area (mm)	170.4 x 127.8
	Pixel Pitch (mm)	0.213 x 0.213
	Response Time	30ms
	Backlight	LED backlight
	Backlight MTBF	50,000 hrs
	Viewing Angle (H/V)	160°/140°
	Contrast Ratio	600 (TYP.)
Brightness (cd/m ²)	450 nits	
Display Control	OSD (on screen display)	
Display Mode	VGA 640 x 350 (70Hz), VGA 640 x 480 (60/72/75Hz), VGA 720 x 400 (70Hz), SVGA 800 x 600 (60/72/75Hz)	
Input Signal	DVI-D	
	VGA	
	HDMI	
	Touchscreen: Serial RS-232 or USB interface	

Specifications

I/O Connectors	1 x RS-232 or USB for touchscreen version 1 x DVI-D 1 x VGA 1 x HDMI 1 x Screw-type DC power input
Power Adapter	Screw-type external AC/DC power adapter
Power Consumption	9.8 W
Touchscreen	Thickness Resistive: 3.2 mm
	Light Transmission Resistive: 80%
	Power Consumption Resistive: +5V @ 100mA
	Touch Life Resistive: 35 million touches Controller interface: RS-232 D-type 9-pin male connector or USB
Dimensions	227 mm (8.94") x 53 mm (2.09") x 162 mm (6.78")
Packing Dimensions	362 mm (14.25") x 165 mm (6.5") x 397 mm (15.63")
Weight (net/gross)	1.42 kg (3.11 lb)/2.3 kg (5.07 lb)
Environment	Operating temperature: -20°C ~ +55°C (-4°F ~ +131°F) Relative humidity: 20% ~ 90% @ +40°C, non-condensing
Packing List	1 x VGA cable 1 x RS-232 or USB cable for touchscreen (for touch version) 1 x Audio cable 1 x EU/US power cord (for AC version)
Certificate	CE

Ordering Information

AC Power	Resistive (RS-232)	P68410R-AC-RS-US-EU
	Resistive (USB)	P68410R-AC-U-US-EU
	Non-touch	P68410N-AC-US-EU
12V/24VDC	Power Resistive (RS-232)	P68410R-DC-RS
	Resistive (USB)	P68410R-DC-U
	Non-touch	P68410N-DC

Optional Accessories

5946L203800E	HDMI cable
59461713400E	DVI cable
82231770050E	Wall mount kit
E226171106	Desktop stand

Dimensions

