

## Making Sense of Data

The Industrial Internet of Things (IIoT) creates its core value when it delivers meaningful, data-driven insights, which can be used to help companies identify emerging issues and formulate actionable plans to eliminate problems or improve processes, whether it is optimizing business operations, adding productivity, or reducing risk and costs. The rapid increase of connected devices, coupled with their increasingly diverse networks, makes effective management of these scattered devices a challenge, resulting in a pressing need for enterprises to come up with better strategies and approaches that will allow them to efficiently control and consolidate their fragmented IIoT assets in order to produce optimal synergy

# Streamlining IIoT Management

The Agent MaaS Suite (AMS) is a set of highly integrated intelligent device management software which was developed as a web service targeting IIoT applications and is supported by most Axiomtek hardware platform models.

AMS offers a management platform featuring data visualization and cloud-connectivity functionalities, allowing users to easily manage and handle tasks from end-point machines all the way up to remote control centers, whether it is protocol communication, data collection and processing, message transmission, or information presentation.

## How AMS Benefits IIoT Operation

### Simplified IIoT Integration and Deployment

A management platform's ability to ensure a future-proofing IIoT ecosystem is crucial, particularly when the IIoT is evolving at an unprecedented rate with plenty more devices anticipated to join.

### High Degree Flexibility in Personalizing IIoT Applications

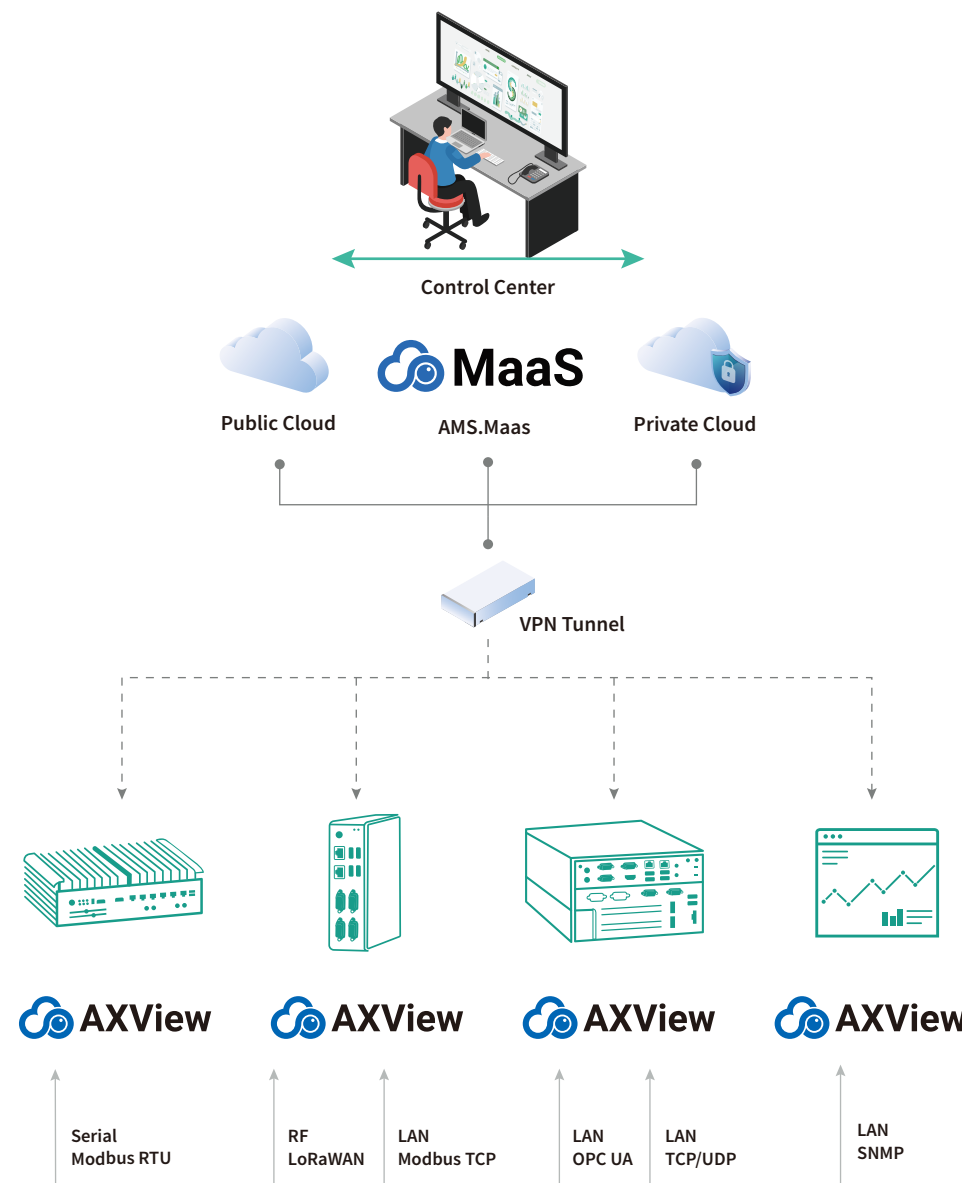
AMS.AXView includes Node-RED that gives developers tremendous freedom to design data processing flows using its graphical nodes, allowing them to tailor their IIoT systems to unique scenarios with minimum programming effort.

### Remote Online Management with Real-Time Data

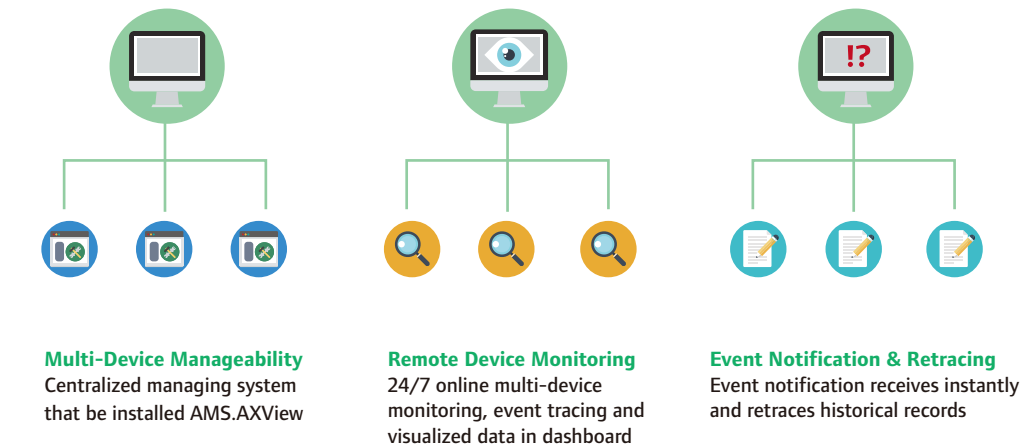
With AMS's web-based services providing a real-time management platform that breaks geographical limitations, remote equipment management has never been easier.

## AMS Framework

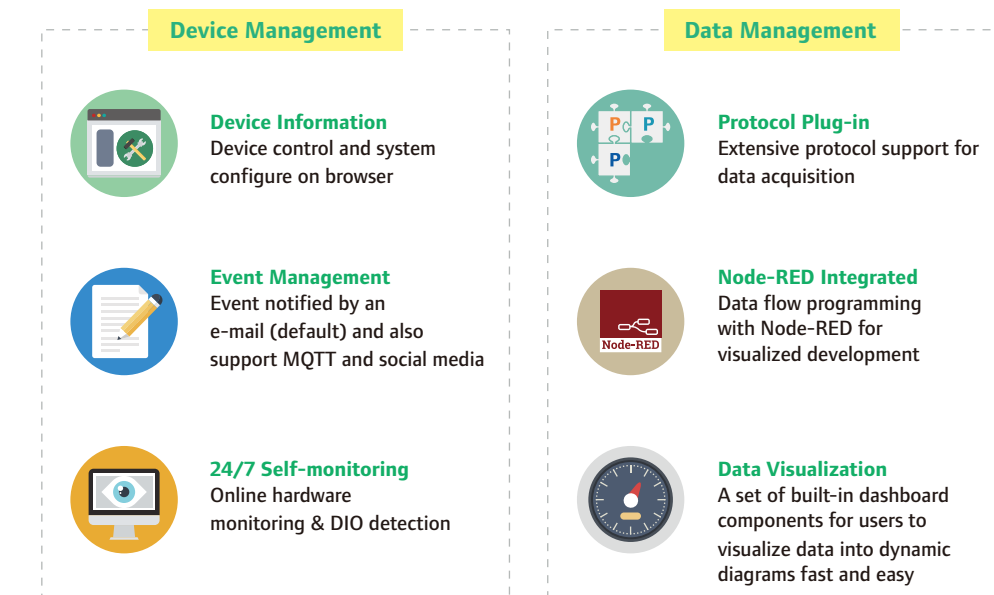
Based on a master-slave architecture, the AMS comprises two packages according to their functional roles: AMS.AXView as a slave for device management, and AMS.MaaS (Management as a Service) as a master for remote management.



## MaaS



## AXView





## ASIA

### Axiomtek Co., Ltd (HQ)

8F., No.55, Nanxing Road, Xizhi District,  
New Taipei City 221, Taiwan  
T/ +886-2-8646-2111  
F/ +886-2-8646-2555  
E/ info@axiomtek.com.tw

### Axiomtek (Malaysia) Sdn. Bhd.

No 16, Jalan Tandang 51/205A,  
Seksyen 51, 46050 Petaling  
Jaya, Selangor, Malaysia  
T/ +603-77733908  
F/ +603-77733873  
E/ info@axiomtek.com.my

### Axiomtek Technology Co., Ltd

10F, Block B, Build 6 (Baohui Building),  
Baoneng Science & Technology Park,  
No.1, Qingxiang Road, Longhua New  
District, Shenzhen 518109, P.R. China  
T/ +86-0755-66865899  
F/ +86-0755-66863068  
E/ axcn@axiomtek.com.cn

### Axiomtek (Thailand) Co., Ltd.

7/17 Moo 6, Tumbol Banmai,  
Amphur Pakkret, Nonthaburi,  
Thailand 11120  
T/ +662-573-4725  
F/ +662-573-4726  
E/ sales@axiomtek.co.th

### Axiomtek Japan Co., Ltd.

Room 305, 1-chome-9-5 Kanda  
Awajicho, Chiyoda City, Tokyo  
101-0063, Japan  
T/ +81-(0)3-6206-0308  
E/ info@axiomtek.co.jp

## USA

### Axiomtek

18138 Rowland Street, City of  
Industry, CA 91748, USA  
T/ +1-626-581-3232  
F/ +1-626-581-3552  
E/ info@axiomtek.com  
sales@axiomtek.com

### Regional Sales Office

T/ +1-626-581-3232  
Western Region ext. 116  
Northeast/Southeast Region ext. 123  
North Central Region ext. 189

### Axiomtek Systems

300 Griffin Brook Drive,  
Methuen, MA 01844, USA  
T/ +1-978-258-0108  
E/ sales@axiomtek.com

## EU

### Axiomtek Deutschland GmbH

Hans-Böckler-Str. 10,  
40764 Langenfeld, Germany  
T/ +49-2173-399360  
F/ +49-2173-399366  
E/ sales@axiomtek.eu

### Axiomtek UK Limited

Office 18, 2 Mount Street, Manchester,  
M2 5WQ, UK  
T/ +44-(0)-7767271699  
E/ wen@axiomtek.com.tw

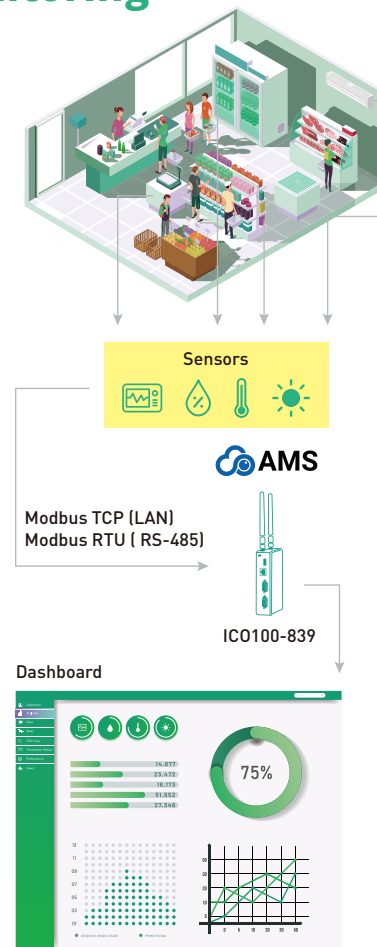
### Axiomtek ITALIA S.r.l.

Via Pavia, 21, 20835 Muggiò (MB),  
Italy  
T/ +39-02-664299.1 r.a.  
F/ +39-02-66400279  
E/ info@axiomtek.it



## Environmental Signal Monitoring

The AMS starter kit for IoT Modbus gateway solution is a plug-and-play solution with integrating hardware platform and software service for IoT application. The hardware platform, ICO100-839, is based on Intel® Celeron® Processor N3350 and runs with Linux OS, Yocto. The AMS.AXView is a web-based management suite with plug-in Modbus (RTU and TCP) protocol for helping users configure their settings and communication with Modbus device quickly and conveniently. There are sensors and a Modbus-supported analog-to-digital connector in the starter kit, and a simple hands-on lab is designed for the user to familiar with IoT Gateway Solution quickly.



### The Benefits and Advantages of AMS Starter Kit

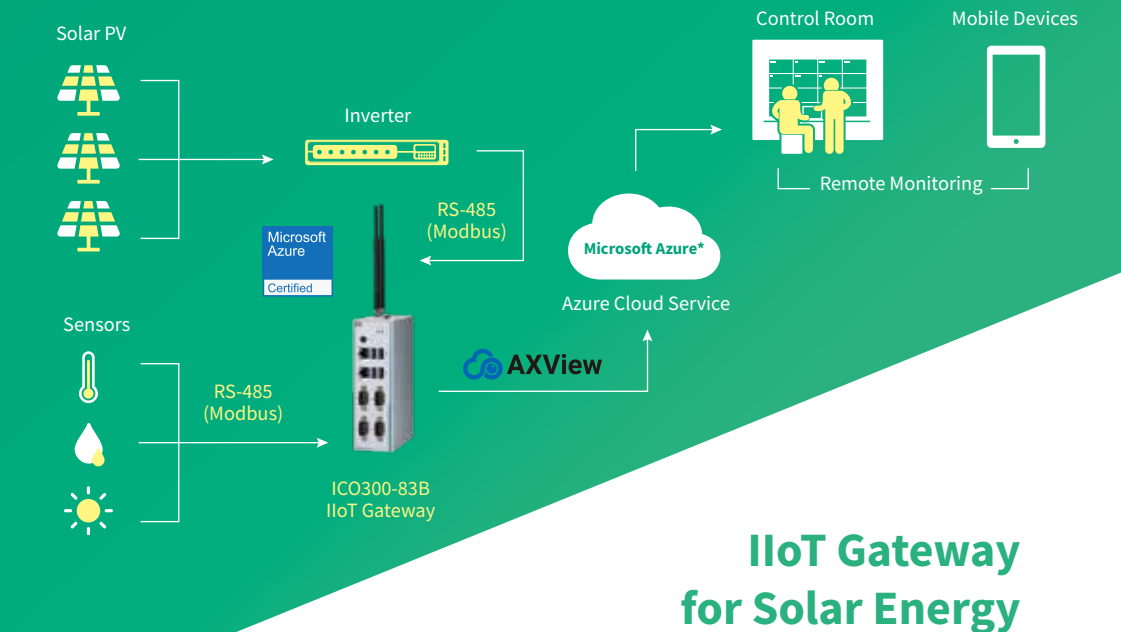
- Easy-to-do device management
- Rich software interfaces reserve for system integration
- Graphic interface for programming
- Rugged design with high compatibility

### ICO100-839

DIN-rail Fanless Embedded System with AMS Starter Kit and Modbus Protocol

### Features

- Cost-effective with fanless and cableless design
- Intel® Celeron® N3350
- 2 COM, 2 USB and GbE LAN
- 8-bit programmable DIO for IIoT gateway
- Wide operating temperature range from -20°C to +70°C
- 12 to 24 VDC wide range power input
- OVP, UVP, OCP, RPP power protection design
- AMS.AXView device management software for IIoT



## IIoT Gateway for Solar Energy

Axiomtek has worked with Intel®, our technology partner, to create our newest Intel® RFP Ready Kit (RRK) with focus on solar energy gateway. Our solar solution RRK supports the use of sensors, leveraging digital controls for effective monitoring and management of energy operations. It allows for better analytics, reduces labor costs and shortens response time in emergency situations. Our solutions include our gateway platform, Windows®OS, Cloud connectivity with Microsoft® Azure and a remote management software. For smart energy and renewable energy applications, these products can serve as intelligent gateways with flexible designs and large data storages to allow for edge computing.

### ICO300-83B

Robust DIN-rail Fanless Embedded System with Intel® Celeron® Processor N3350/Pentium® Processor N4200, Isolated COM, LAN and DIO Option

### Features

- Cost-effective with fanless and cableless design
- Intel® Celeron® N3350/Pentium® 4200
- 2 or 4 isolated COM, 4 USB, 2 GbE LAN
- 8-bit programmable DIO for IIoT gateway (optional)
- Wide operating temperature range from -40°C to +70°C
- 12 to 24 VDC wide range power input
- OVP, UVP, OCP, RPP power protection design
- AMS.AXView intelligent remote monitoring software for IIoT



## Empowering Smart IIoT Management