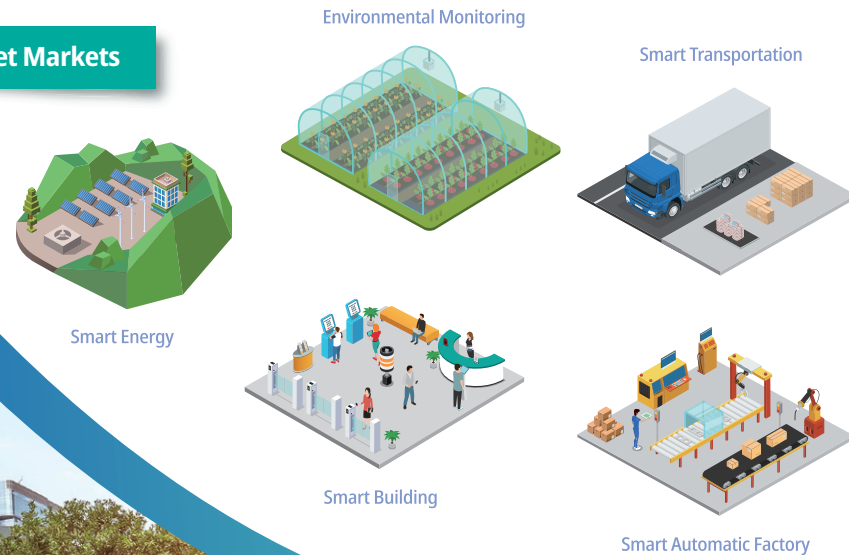


ARM-based IoT Gateway Solutions

Axiomtek provides ARM-based gateway systems, front end sensor devices (IRU) and ODM services. The ARM-based gateway solutions focus on applications including transportation, smart automation and smart buildings, with specific hardware design and domain certifications. The front end sensor devices have analog input with NI LabView capability. All system products are accompanied by board support package services for Android/Linux operating systems, providing a turnkey solution for customers to build their ARM-based IoT ecosystems easily and efficiently.

Target Markets



Agent Series

- Design optimized for vertical markets
- Certifications for specific domains
- Integration between software and hardware



IRU Series

- Flexible I/O, CPU board design
- Capability with 3rd party software such as NI LabView
- Integrated LoRa/ Wi-Fi/ 4G wireless solution



IFB Series

- ARM-based embedded system
- Flexible I/O selection
- Remote control & management

Transportation Agent336C



- E-Mark Certified
- RISC-based module (i.MX 8M) processor
- 3GB LPDDR4 memory onboard
- 8GB eMMC onboard
- 9 to 36 VDC wide range power input with terminal block
- Ready-to-run embedded Linux/Android operating system
- Wide operating temperature range from -20°C to +70°C
- Intelligent solution for vehicle power management (ACC ignition)
- One isolated CANBus
- One isolated 2-in/2-out DIO
- 2 PCI Express Mini card slots
- External SIM card slot

IoT Applications Agent200-FL-DC



- RISC-based (i.MX 6UltraLite) processor 528 MHz
- 256MB DDR3 SDRAM onboard
- 4GB eMMC flash onboard
- 2 PCI Express Mini Card slots (Wi-Fi or 3G/4G)
- 4 digital inputs and 4 digital outputs
- Power input range of 9V to 48V DC with terminal block
- Embedded Linux operating system (Yocto)
- Wide operating temperature range from -40°C to +70°C

Remote I/O System IRU131



- RISC-based (i.MX 6UltraLite) processor 528 MHz
- 512MB DDR3 SDRAM onboard
- 8GB eMMC flash onboard
- 2 PCI Express Mini Card slots (Wi-Fi, 3G/4G or LoRa)
- 1 isolated DIO (2-in/2-out)
- Power input range of 9V to 48V DC with terminal block
- Supports OPC UA, Node-RED, Python, MQTT

Signal Measurement IRU151



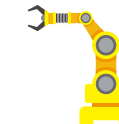
- RISC-based (i.MX 6UltraLite) processor 528 MHz
- 512MB DDR3 SDRAM onboard
- 8GB eMMC flash onboard
- 2 PCI Express Mini Card slots (Wi-Fi, 3G/4G or LoRa)
- 4 isolated analog input channels (16-bit, 100 S/s)
- 1 isolated DIO (2-in/2-out)
- Supports LabVIEW versions later than 2016
- Supports OPC UA, Node-RED, Python, MQTT

High-speed Signal Measurement IRU152



- RISC-based (i.MX 6UltraLite) processor 528 MHz
- 512MB DDR3 SDRAM onboard
- 8GB eMMC flash onboard
- 2 PCI Express Mini Card slots (Wi-Fi, 3G/4G or LoRa)
- 4 isolated analog input channels (16-bit, 250 KS/s)
- 1 isolated DIO (2-in/2-out)
- Supports LabVIEW versions later than 2016
- Supports OPC UA, Node-RED, Python, MQTT

Industrial Automation rBOX630



- Fanless design
- RISC-based module (i.MX 6) processor
- 1GB DDR3 SDRAM onboard
- 4GB eMMC onboard
- Complete industrial AP development software
- 12 to 48 VDC wide range power input with terminal block
- Ready-to-run embedded Linux operating system
- Wide operating temperature range from -40°C to +70°C

IFB122



IFB125

IFB112

Environmental Monitoring

Cost effective ARM-based embedded system with i.MX 6UL Processor, COM, 2 LANs and DIO (2-in/1-out) with one flexible I/O selection for smart energy and environmental monitoring such as wind power, water power, or green house.

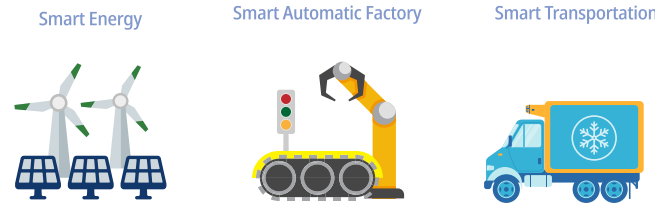
- RISC-based (i.MX 6UltraLite) processor 528 MHz
- 256MB DDR3 SDRAM onboard
- 4GB eMMC flash onboard
- 1 PCI Express Mini Card slot (Wi-Fi or 3G/4G)
- 2 digital inputs and 1 digital output
- Power input range of 9V to 48V DC with terminal block
- Embedded Linux operating system (Yocto)
- Fanless and compact design
- Wide operating temperature range from -40°C to +70°C



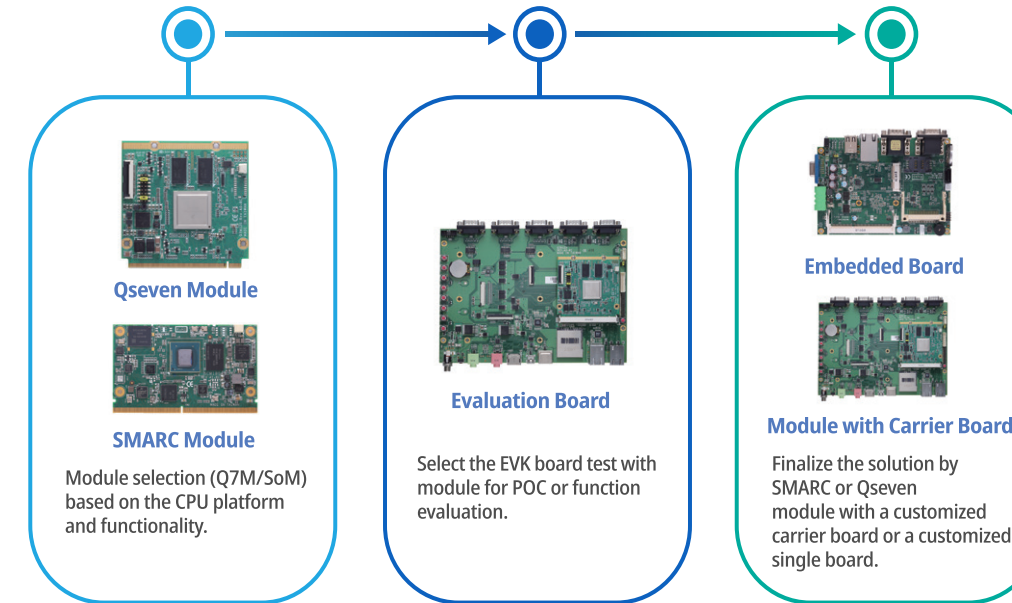
ARM-based Embedded Board Solutions

Axiomtek provides ARM-based computer-on-modules and single board computers for smart energy, intelligent automatic factory, and smart transportation applications. These highly reliable and stable motherboards support package services for Android/Linux operating systems, providing a turnkey solution for customers to build up their ARM-based system solutions easily and efficiently. With professional NXP platform expertise and extensive board design experience, Axiomtek provides the highest quality and flexibility in board ODM selection. From the board form factor to various OS (Linux, Android) support, Axiomtek is able to tailor product offerings to specific customer needs with its board ODM services. Moreover, Axiomtek also integrates experience and knowledge in system designing and certification. If the customer wants to put a board in any harsh environment or get certifications like CE, E-MARK and so on, Axiomtek can design a board product to fulfill these requirements while also offering a pre scan service for the board.

Target Markets



Design-in Service



SCM120



SMARC v1.0 SoM with Quad/DualLite 800 MHz (Industrial) SoC

- SMARC form factor (82 x 50 mm) SoM
- 2 CANBus 2.0B
- LVDS/HDMI 1080P
- 10/100/1000 Mbps Ethernet
- Linux3.0.35/Android 4.3

Q7M120



Qseven v2.0 SoM with Quad/DualLite 800 MHz (Industrial) SoC

- High flexibility Qseven v2.0 compliant design
- 2 CANBus
- 24-bit TTL signal
- LVDS/HDMI 1080P
- 10/100/1000 Mbps Ethernet

SCM180



SMARC v2.0 SoM with i.MX8M Quad/Dual 1.3 GHz (Industrial) SoC

- SMARC 2.0 (82 x 50 mm)
- HDMI 2.0a up to 4K
- MIPI DSI or Dual Channel LVDS, and MIPI CSI
- 10/100/1000 Mbps Ethernet
- USB3.0, USB OTG,
- PCIe 2.0, CANBus 2.0B



ARM-based Board & System Solutions

ASIA

Axiomtek Co., Ltd (HQ)

8F., No.55, Nanxing Road, Xizhi District, New Taipei City 221, Taiwan

T/ +886-2-8646-2111
F/ +886-2-8646-2555
E/ info@axiomtek.com.tw

Axiomtek Technology Co., Ltd

10F, Block B, Build 6 (Baohui Building), Baoneng Science & Technology Park, No.1, Qingxiang Road, Longhua New District, Shenzhen 518109, P.R. China

T/ +86-0755-66865899
F/ +86-0755-66863068
E/ axcn@axiomtek.com.cn

Axiomtek Japan Co., Ltd.

Room 305, 1-chome-9-5 Kanda Awajicho, Chiyoda City, Tokyo 101-0063, Japan

T/ +81-(0)3-6206-0308
E/ Info@axiomtek.co.jp

Axiomtek (Malaysia) Sdn. Bhd.

No 16, Jalan Tandang 51/205A, Seksyen 51, 46050 Petaling Jaya, Selangor, Malaysia

T/ +603-77733908
F/ +603-77733873
E/ info@axiomtek.com.my

Axiomtek (Thailand) Co., Ltd.

7/17 Moo 6, Tumbol Banmai, Amphur Pakkret, Nonthaburi, Thailand 11120

T/ +662-573-4725
F/ +662-573-4726
E/ sales@axiomtek.co.th

USA

Axiomtek

18138 Rowland Street, City of Industry, CA 91748, USA

T/ +1-626-581-3232
F/ +1-626-581-3552
E/ info@axiomtek.com
sales@axiomtek.com

Regional Sales Office

T/ +1-626-581-3232
Western Region ext. 116
Northeast/Southeast Region ext. 123
North Central Region ext. 189

Axiomtek Systems

300 Griffin Brook Drive, Methuen, MA 01844, USA

T/ +1-978-258-0108
E/ sales@axiomtek.com

EU

Axiomtek Deutschland GmbH

Hans-Böckler-Str. 10, 40764 Langenfeld, Germany

T/ +49-2173-399360
F/ +49-2173-3993636
E/ sales@axiomtek.eu

Axiomtek UK Limited

Office 18, 2 Mount Street, Manchester, M2 5WQ, UK

T/ +44-(0)-7767271699
E/ wen@axiomtek.com.tw

Axiomtek ITALIA S.r.l.

Via Pavia, 21, 20835 Muggiò (MB), Italy

T/ +39-02-664299.1 r.a.
F/ +39-02-66400279
E/ info@axiomtek.it